

# — HGSE — Weekly

Office of  
Student Affairs



Monday, April 1, 2024

## WHAT YOU NEED TO KNOW

- [Academic Coaching](#)
- [Accessibility and Accommodations](#)
- [Connecting with OSA Virtually](#)
- [Quick Links](#)
- [Yoga and Mindfulness](#)
- [Work Accountability Groups](#)
- [I Notice/I Care Form](#)
- [Food Insecurity Resources / Clothes & Furniture Resources](#)
- [Support Resources in Times of Crisis](#)

## HIGHLIGHTED ANNOUNCEMENTS

SUBMIT YOUR SPEECH BY: Tuesday, April 2, 11:59PM EDT

### HGSE Convocation SPEECH CONTEST



### HGSE Student Speech Competition



Graduating students are invited to participate in the HGSE student speaker competition. The selected student will deliver their five-minute speech during the HGSE Convocation Ceremony **on Wednesday, May 22**. Speeches will be judged on intelligence, wit, and significance to the audience.

For more information and to submit your speech, please [visit the OSA website](#).

ORDER YOUR REGALIA TODAY!



Have You Ordered Your Cap and Gown for Commencement?

The deadline for placing your order is Sunday, April 7, at 11:59PM EDT.

**April 7th is a hard deadline, necessary to manage production, processing, and shipping timelines.**

For more information and to access the link to place your order, [click here!](#)

## THIS WEEK

Monday, April 1, 12PM-1PM EDT (Hybrid)

**JOB SEARCH**

**CSO BROWN BAG LUNCH SERIES**

**STAYING POSITIVE DURING YOUR JOB SEARCH**

Join us for a session on staying positive during your job search. The job search can be an emotional and physical roller coaster. Learn strategies for increasing resiliency and its importance to well-being and balance.

APRIL 1ST, 12:00-1:00 PM  
HYBRID (ZOOM AND LARSEN 106)  
REGISTER VIA THE HQB

QUESTIONS? EMAIL CSO@GSE.HARVARD.EDU

Staying Positive During Your Job Search

Larsen 106 and virtual

Join the Career Services Office for a session on staying positive during your job search. The job search can be an emotional and physical roller coaster. Learn strategies for increasing resiliency and its importance to well-being and balance. [Click here](#) to learn more and for the Zoom link.

Monday, April 1, 4PM-5:30PM EDT (In-Person)



Please join us for a fireside conversation with Jaime Saavedra, former Minister of Education of Peru and Human Development Director for Latin America and the Caribbean at the World Bank on 'Leading Education Reform at Scale in Latin America'. Moderated by Professor Fernando M. Reimers. Monday, April 1<sup>st</sup> 4pm-5.30pm. Longfellow 319.

## Leading Education Reform at Scale in Latin America

Longfellow 319

**Please join us for a fireside conversation with Jaime Saavedra, former Minister of Education of Peru and Human Development Director for Latin America and the Caribbean at the World Bank on 'Leading Education Reform at Scale in Latin America'.**

***Moderated by Professor Fernando M. Reimers***

Monday, April 1, 7PM EDT (In-Person)



Aleeza Ben Shalom -- Live at Harvard Hillel

Rosovsky Hall, 52 Mt. Auburn Street


All are welcome! Register to attend [here](#).

Tuesday, April 2, 11AM-12:30PM EDT (In-Person)

The Future of Education

Eliot Lyman Room (Longfellow 2nd Floor)

**Student organization HGSE Design Matters invites you to their next event! With experts in the education industry and education entrepreneurs, from professional concepts to practical experience, let's explore the track of education technology entrepreneurship together**



**The Push to Close COVID-Era Gaps:**  
Acting on New Findings from the Education Recovery Scorecard

**APRIL 2**  
5-6:30 P.M. E.T.  
ASKWITH HALL

Longfellow,  
13 Appian Way  
Cambridge, MA 02138

**SPEAKERS**  
*Aleesia Johnson*  
*Thomas Kane*  
*Daniel McKee*  
*Catherine Truitt*

**MODERATOR**  
*Christina Grant*

Askwith Education Forum: The Push to Close Covid-Era Gaps

Askwith Hall

**Join Professor Thomas Kane and other education leaders as they discuss ways in which states and districts can act on new findings from the Education Recovery Scorecard and work to close the gaps exacerbated by COVID.**

[Register here.](#)

Wednesday, April 3, 10:30AM-12PM EDT (Virtual)

CENTER FOR

**ASTROPHYSICS**

HARVARD & SMITHSONIAN

A Special Collection of Studies on What Gets Students Interested in Science: Results from National U.S. Surveys

**This Seminar presents five studies investigating factors that influence students' STEM or computer science affinity. These factors range from the media of toys that children use, to youths' concerns over AI ethics, from baking in the kitchen, to tinkering in the makerspace. The five presenters are graduate students from the Faculty of Education at Hong Kong University, advised by Dr. Chen Chen, using datasets collected by the Harvard & Smithsonian Science Education Department (SED) team and the Center for Astrophysics (CfA).**

[Click here](#) for the Zoom link.

Wednesday, April 3, 12PM-1PM EDT (Virtual)



Student Loan Repayment Webinar

[Register here.](#)

**Get tips to strategize repaying your federal and private student loans while still managing your other**

financial goals. Plus, learn if refinancing or Public Service Loan Forgiveness makes sense for you.

**Register early** to save your spot!!

Contact: **Val Harris** Senior Associate Director, HGSE  
Financial Aid Office  
*Sponsored by HGSE Financial Aid Office and The  
Harvard University Employee Credit Union*

Wednesday, April 3, 3PM-3:30PM EDT (Virtual)



Education Now: Media Literacy Education and AI

In this episode, we'll discuss the skills needed to navigate a world increasingly influenced by artificial intelligence, misinformation, and fake news.

**Register for the Zoom link.**

Thursday, April 4, 8:30AM EDT

A promotional graphic for the uPivotal Innovate Africa Conference 2024. It features a dark background with white and orange text. On the right, there is a portrait of Gene Wade, the keynote speaker. The text includes the event name, location (Cambridge 2024), dates (4-5 April, 2024), time (8:00 AM - 4:00 PM EDT), and a registration link. It also mentions that the event is co-hosted by HGSE Africa Policy Exchange and is an officially recognized student organization. The keynote speaker, Gene Wade, is the CEO of NewEdIn, Inc. and a Venture Advisor at AI Fund. He is also a prominent education entrepreneur committed to eliminating barriers to education and creating new possibilities for students worldwide. Before his roles at AI Fund and NewEdIn, Mr. Wade co-founded edX, a leading education technology platform serving over 150,000 US college students. He also co-founded edX Learning, an after-school learning network for more than 50,000 US elementary school students, and LearnNow, a Charter Management Organization that built and managed a national network of public charter schools. Mr. Wade earned his BA in Political Science from Morehouse College, JD from Harvard Law School, and MBA from the Wharton School. His educational pioneering efforts have garnered coverage in prestigious publications such as The New York Times, The Wall Street Journal, and Forbes.

Innovate Africa Conference 2024

Gutman Conference Center

Don't miss the Innovate Africa Conference 2024, co-hosted by the Harvard Graduate School of Education Africa Policy Exchange Group. Reserve your seat <https://events.upivotal.com/registrations> for inspiring discussions and networking opportunities, including a keynote address by Gene Wade, a leading African-American EdTech entrepreneur on the Advisory Board of the AI Fund and Make-A-Wish foundation.

*HGSE Africa Policy Exchange Group is an officially recognized student organization.*

Thursday, April 4, 5PM-7PM EDT (In-Person)



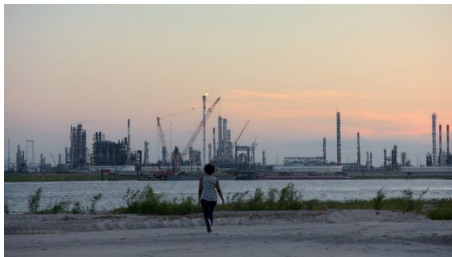
Networking Night: Latin American Education Forum

Gutman Conference Center

**Student organization Latin American Education Forum invites you to their first Networking Night. Enjoy a night of food, music, and meeting other people interested in education in Latin America.**

**[RSVP here.](#)**

Thursday, April 4, 5PM-7PM EDT (In-Person)



Screening of "Hollow Tree" with Director, Kira Akerman, Ed.M. candidate 2024

Askwith Hall

**Join us for the Boston premiere of "[Hollow Tree](#)," hosted by the Harvard Hutchins Center's [History Design Studio](#) and co-sponsored by HGSE. The 73-minute award winning documentary follows three young women as they travel to different sites along the Mississippi River and imagine Louisiana's past — its history of slavery, Indigenous dispossession, and colonization — and, by extension, Louisiana's future. The screening will be followed by a conversation with Director Kira Akerman, Producer Monique Walton and the documentary film's three protagonists, Mckenzie Fanguy, Annabelle Pavy, and Tanielma DaCosta. [Reserve your advance tickets here.](#)**

Friday, April 5, 10AM-11AM EDT (In-Person)



EdEthics Film/Digital Case

Longfellow 229

Join student organization EdEthics Students @ HGSE for breakfast over a brief film centered around an ethical dilemma in education and conversation connecting it back to your own practice.

[RSVP here.](#)

Friday, April 5, 5PM-6:30PM EDT (In-Person)

**Home- and Community-Based Pedagogies of Indigenous Kichwa Communities in the U.S**

Join us for a roundtable conversation as we discuss home- and community-based pedagogical practices with Indigenous members of the Kichwa Otavalo and Saraguro communities residing across the United States. This event seeks to emphasize the importance of using these pedagogies and enculturation processes, the academic and developmental benefits these bring, and the need for schools to support families and community practices for diasporic youth to succeed within their school and broader society.

Date: April 5th, 2024  
 Time: 5:30 - 6:30 PM (EST)  
 Location (in person): Eliot Lyman Room, Longfellow Hall, -HGSE  
 Registration link: <https://forms.gle/KS1U9671G0N7K047>

This event is open to the university and the general public.  
 \* This event will be held in English.

Home- and Community-Based Pedagogies of Indigenous Kichwa Communities in the U.S

Eliot Lyman Room, Longfellow Hall

Join us for a roundtable conversation as we discuss home- and community-based pedagogical practices with Indigenous members of the Kichwa Otavalo and Saraguro communities residing across the United States. This event seeks to emphasize the importance of using these pedagogies and enculturation processes, the academic and developmental benefits these bring, and the need for schools to support families and community practices for diasporic youth to succeed within their school and broader society.

Moderated by:

**Luís González-Quilpa**, Ed.M. Candidate in Latin American Studies and Education

**Thalia Cackiwaht**, Ed.M. Candidate in Education Leadership, Organizations, and Citizenship

Invited Speakers

**Nelly Lema**, President of the Kichwa Community of Chicago

**Taqilka Cackiwaht**, M.Ed. in Moderate Disabilities, Special Education Teacher in Watertown, MA.

**Sonia González-Quilpa**, Junior at Weymouth, Fremont High School in Weymouth, WI.

**Reguinda González**, BVM, MA in Animal Sciences, Full-time of Santa Gertrudis, Co-Owner, González Dairy Farm, Watertown, WI.

[RSVP here.](#)

Organized by the Harvard Ecuadorian Student Organization, the Harvard University David Rockefeller Center for Latin American Studies, the Immigration Initiative at Harvard, the Harvard Graduate School of Education Office of Diversity, Equity, and Inclusion, the Quechua Initiative on





***Global Indigeneity at Harvard, and the Harvard University Native American Program.***

Friday, April 5, 6PM EDT (In-Person)



HGSE Hangouts at the Queen's Head Pub

[Queen's Head Pub](#)

45 Quincy Street, Cambridge – **located in the same building as Sanders Theater - below the entrance to Annenberg Hall (the first-year dining hall)**

**HGSE Hangouts are back for the spring semester! Join your fellow HGSE students at the Queen's Head Pub on the dates listed below to connect over food and drinks. Food will be served on a first come, first served basis. Beer, wine, and non-alcoholic beverages will be available for purchase. The event begins at 6:00PM.**

**HGSE Hangouts will take place on April 5th, & April 12th.**

***If you require accessibility accommodations, please contact Andrea Le at [andrea\\_le@gse.harvard.edu](mailto:andrea_le@gse.harvard.edu) at least 48 hours in advance.***

## **FUTURE EVENTS AND OPPORTUNITIES**

Monday, April 8, 12PM-1PM EDT (Hybrid)



**New Civics, New Citizens**  
Critical, Competent, and Responsible Agents

Monday | 4/8/24 | 12p.m. EDT |  
Gutman Conference Center E3 and Zoom

Helen Hastie  
Janine Bempechat, Ed.M. '79, Ed.D. '86

Register: [bit.ly/NewCivicsNewCitizens](https://bit.ly/NewCivicsNewCitizens)

## Gutman Library Book Talk - New Civics, New Citizens: Critical, Competent, and Responsible Agents

Gutman Conference Center E3 and Zoom

**‘Civic’ participation increasingly extends beyond voting in elections, to informal and unconventional action. Making one’s voice heard involves diverse communication media and wide-ranging skills. Young people are motivated to engagement by concern about climate change and the rights of marginalized people.**

[RSVP here.](#)

Monday, April 8, 12PM-1PM EDT (In-Person)

## Harvard Radcliffe Institute Student-Only Lunch



Date: Monday, April 8  
Time: 12-1 PM EST

Participate in the Harvard Radcliffe Institute's Student-Only Lunch with author and artist Xavier Cortada. This is an opportunity to discuss how Cortada's multidisciplinary artwork engages communities in problem-solving, awareness, and action around climate change, sea level rise, and biodiversity loss.

The lunch will be held in the Harvard Radcliffe Institute's Student Center, 100 Brookline Ave., 10th Floor, Cambridge, MA 02139. Registration is required. Register here: [https://www.harvard.edu/radcliffe/institute/student-only-lunch](#)

Featuring:  
Xavier Cortada



Student-Only Lunch with Xavier Cortada

**Please join us for a student-only lunch with Xavier Cortada. This is an opportunity to discuss how Cortada’s multidisciplinary artwork engages communities in problem-solving, awareness, and action around climate change, sea level rise, and biodiversity loss.**

[Register here.](#)

Monday, April 8, 7PM-8:15PM EDT OR Wednesday, April 10, 12PM-1:15PM EDT



**Call for Participants**

Join Our Focus Group on Zoom  
Share Your Graduate Admission Journey

Monday, 4/8, 7-8:15pm EST  
Or  
Wednesday, 4/10, 12-1:15pm EST

Call for Participants: Join our Focus Group - Share Your Graduate Admission Journey

Select one from **Monday, 4/8, 7-8:15pm** or **Wednesday, 4/10, 12-1:15pm**

**As a successful HGSE student, your experience with the admission process is invaluable to us. We invite you to reflect on what is working well and what can be improved for future applicants in a focus group hosted by the Learning, Teaching, and Assessment team. Although all perspectives are welcome, the**

admissions team is focused on hearing from domestic Ed.M. students with prior professional experience. In appreciation for your time and contributions, you will receive a \$10.00 Gutman Café Voucher.

[Complete the form here](#) to sign up and receive the Zoom link.

Tuesday, April 9, 11:45AM-1PM EDT (In-Person)



DEI Lunch & Learn for International Students

Gutman Conference Center, Event 4 • [Register here](#)

During our next lunch, we will provide an opportunity for you to reflect on your experiences from the past year navigating issues of diversity and identity. What do you wish you had known about in advance? Have your perspectives on identity changed since the start of the year? Our goal during our time together is to foster meaningful small group discussions and gather your valuable feedback to enhance the support systems for our international student community. [Please RSVP if you plan to attend.](#) Lunch will be served.

The DEI Lunch & Learn series is a space for HGSE international students to convene, connect, and explore topics of diversity, equity, and inclusion in a brave and supportive space. Conversations will be facilitated by Dr. Junlei Li, HGSE faculty member and co-chair of the HDE Program, Andrea Le, Associate Director of Community Building and International Student Support, and Annie Lewis, Program Coordinator for the International Student Experience.

If you require accessibility accommodations, please contact Annie Lewis at [annie\\_lewis@gse.harvard.edu](mailto:annie_lewis@gse.harvard.edu) at least 48 hours in advance.

Tuesday, April 9, 12PM-1PM EDT (Virtual)



Rebalancing the Mental Load: Breaking Free of Burnout

[Register Today](#)

Shouldering the mental load and domestic labor can be exhausting. Throw caregiving responsibilities and work into the mix and you've got a recipe for burnout.

Join Ashley Brichter, Certified Fair Play Facilitator and Family Strategist, for a conversation that will help you rebalance the load and break out of these patterns. You'll walk away with an action plan and strategies to navigate your personal circumstance as it relates to cultural expectations of domestic labor, weaponized incompetence, guilt, self-sabotage, and resentment.

[Sign up now to join us live](#) or receive a recording of this can't-miss conversation. These Care Conversations webinars are free to attend, and a recording will be shared afterwards.

SIGN UP BY Wednesday, April 10, 9AM EDT



NEW! HGSE International Student Ambassador Program

What do you wish you knew as a new international student at HGSE? [Sign up to be an International Student Ambassador](#) to help welcome new international students from the class of 2025 to the HGSE community! When you sign up to be an International Student Ambassador, you will be matched with an incoming international student and have the opportunity to provide helpful tips and advice for beginning life and studies in Cambridge. Since many students have region-specific questions and advice, new and current students will be matched by home country when possible.

[Learn more here](#) and [sign up by Wednesday, April 10 at 9:00am.](#)

Wednesday, April 10, 1PM-2:30PM EDT



## EdEthics Normative Case Study Discussion

Gutman 404

**EdEthics helps educators and policy makers explore ethical dilemmas in schools through short, accessible normative case studies. Join us to discuss a case about the tensions that educators when trying to raise critical consciousness amidst anti-CRT laws.**

**RSVP at [jhauver@g.harvard.edu](mailto:jhauver@g.harvard.edu) -- you will receive a copy of the case (a 4.5 page narrative) to be read before our discussion.**

Thursday, April 11, 4:30PM-6:30PM EDT (In-Person)



## HGSE EdTalks

EdTalks: 4:30 – 5:30PM, Askwith Hall  
Reception: 5:30 – 6:30PM Eliot Lyman

**Voices from the community, for the community – EdTalks are “TED Talk” style presentations created to shine a spotlight on HGSE students and their educational impact around the world. Please join us for a series of brief presentations from your fellow students on topics they are passionate about. We hope you will stick around after the talks to engage with presenters and peers over light refreshments.**

***If you would like to request accommodations or have questions about the physical access provided, please contact [andrea le@gse.harvard.edu](mailto:andrea_le@gse.harvard.edu) (617-495-1457) in advance of your participation. Requests for American Sign Language interpreters and/or CART providers should be made at least two weeks in advance, if possible. Please note that the University***

*will make every effort to secure services, but that services are subject to availability.*

APPLICATIONS ACCEPTED THROUGH : Tuesday, April 16, 11:59PM EDT



The Harvard Consulting on Business and the Environment Sustainability Grant

**Harvard Consulting on Business and the Environment (CBE) invites you to [apply to our annual sustainability grant program!](#)**

**We initially launched the sustainability grant program with the mission of supporting our fellow students and community members in our collective mission of sustainability, and we would love to support you on your sustainability-related endeavors.**

**Our funding this year is up to \$15,000 and we will be distributing grants to individuals, student organizations, student projects, and non-profits dedicated to climate and sustainability-related impact. We are particularly looking to support underrepresented minorities and projects. CBE will be funding up to \$2,000 per project.**

**[Click here](#) for additional details.**

Tuesday, April 16, 5PM-7PM EDT



The Importance of Educators Learning about Black Boys and Trauma

Askwith Hall

Join for a film screening and panel discussion on *Triggered Life*, a multi-sensory, multimedia, post-traumatic story. How exactly does sexual trauma cast a shadow over the wholeness of Black male selfhood?

Co-sponsored by the Office of Student Affairs

Wednesday, April 17, 12PM-1PM EDT (Virtual)



HGSE Industry Coffee Chat: Education Policy

[Register via Zoom](#)

Attend to connect with HGSE alums and current students who work or have interest in education policy. This session will be facilitated by Michael Rady, Ed.M. '22, Senior Education Programs Manager at GLSEN, with panelists Casey Peeks, Ed.M. '19, Senior Director, Early Childhood Policy at Center for American Progress and Tony Hanna, Ed.M. '17, Director of Public Policy and Advocacy at Seeding Success.

Thursday, April 18, 5PM-6:30PM EDT (In-Person)



Askwith Education Forum: Cradle-to-Career Pathways Supporting Social and Economic Mobility

Askwith Hall

Join us for a discussion on the potential of the cradle-to-career movement to eliminate intergenerational poverty and strengthen our democracy.

[Register here.](#)

Friday, April 19, 4PM-6:45PM EDT (In-Person)



The 15th China Education Symposium at Harvard University

Askwith Hall

On April 19-21, 2024, the 15th China Education Symposium at Harvard University will be grandly held under the theme of “Humanities and Technology: Embracing the New Wave of Education”. The opening ceremony will welcome renowned speakers from the fields of education, technology, and humanities to discuss and share thoughts. The event will be conducted in English.

[Register here.](#)

*If you would like to request accommodations or have questions about the physical access provided, please contact [andrea\\_le@gse.harvard.edu](mailto:andrea_le@gse.harvard.edu) (617-495-1457) in advance of your participation or visit. Requests for American Sign Language interpreters and/or CART providers should be made at least two weeks in advance, if possible. Please note that the University will make every effort to secure services, but that services are subject to availability.*

Monday, April 22, 12PM-1PM EDT (Hybrid)



## Teaching the Invisible Race: Embodying a Pro-Asian American Lens in Schools

Gutman Conference Center 3 & Zoom

In *Teaching the Invisible Race*, anti-bias and anti-racist educator and researcher Tony DelaRosa, Ed.M.'18, delivers an insightful and hands-on treatment of how to embody a pro-Asian American lens in your classroom while combating anti-Asian hate in your school. The author offers stories, case studies, research, and frameworks that will help you build the knowledge, mindset, and skills you need to teach Asian-American history and stories in your curriculum.

[RSVP Here.](#)

## Events This Spring

**UNDERSTANDING & CELEBRATING ISLAM & JUDAISM**

**MAR 22** Purim Hamantaschen Making Event  
12:00 - 1:00 p.m.  
Gutman Lobby

**APR 2** Harvard-Wide Ramadan Iftar  
6:30 - 8:30 p.m.  
SOCH/Hilles Library (59 Shepard Street)

**APR 4** Faculty & Staff Workshop on Islamophobia with HGSE Alumna Barbara Sahli  
2:00 - 3:30 p.m.  
Virtual

**APR 23** Passover Seder  
7:15 - 10:00 p.m.  
GCC 1

**MAY 2** Trip to Boston Auschwitz Exhibit  
1:00 - 2:30 p.m. (does not include travel time)  
The Castle at Park Plaza - Bus from HGSE.

In collaboration with the Jewish Student Organization, the Student Islamic Society, and the Office of Student Affairs.

## Understanding & Celebrating Islam & Judaism

Passover Seder  
**Tuesday, April 23**  
7:15 - 10:00 p.m.  
GCC 1

The Office of Diversity, Equity, and Inclusion, the Office of Student Affairs, and the Jewish Student Organization invite you and your family to join their Passover Seder dinner. Passover commemorates the Hebrews' exodus from Egypt, and is traditionally observed by abstaining from leavened grains. [RSVP here.](#)

Auschwitz Exhibition  
**Thursday, May 2**  
1:00 - 2:30 p.m.

A bus from HGSE will take participants to and from the Castle at Park Plaza (130 Columbus Street) in Boston.

In its regional premiere, more than 700 original objects are shown in the first traveling exhibition about the Auschwitz concentration camps.

Through this daunting selection of objects from the Auschwitz-Birkenau State Museum in Poland, as well as more than 20 institutions and museums all over the world, this exhibition portrays the complex reality of the notorious camp while sharing first-hand stories from those who survived, and those who perished.

[RSVP here.](#)

Thursday, April 25, 11:30AM-4PM EDT (In-Person)

## Alumni Opportunities Fair

Thursday, April 25th

11:30am - 4:00pm

Gutman Conference Center, E1-3

[bit.ly/alumnioppsfair2024](https://bit.ly/alumnioppsfair2024)



Alumni Opportunities Fair

Gutman Conference Center 1-3

Register via The Hub:

<https://bit.ly/alumnioppsfair2024>

Are you graduating this May? **Learn about the many services, benefits, and programs available to you as an HGSE alum at the Alumni Opportunities Fair!**

**This event is for current students who are expected to graduate in May 2024. Offices from across HGSE and Harvard will participate to share their resources with you. Refreshments will be served and music will be playing! We hope you will join us for this day of celebration, which is just one of many events for YOU, our soon-to-be graduates!**

Wednesday, May 1, 3PM EDT (In-Person)



In Conversation with Sam Altman of OpenAI

Harvard Memorial Church

Join for a deep dive into the policy implications of emerging AI and explore its impact on our global society. Don't miss this opportunity to engage with a visionary thinker at the forefront of innovation. To secure your spot, [please register here](#).

Wednesday, May 1, 6PM-7PM EDT (In-Person)



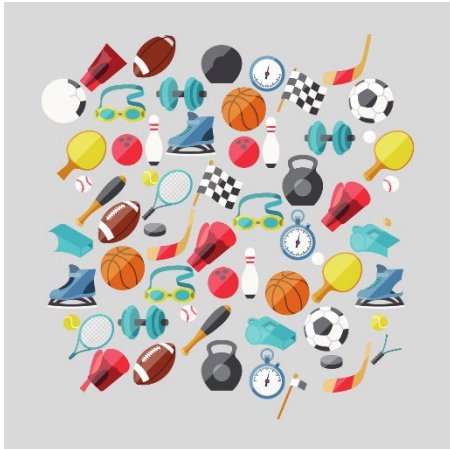
2024 President's Innovation Challenge Awards Ceremony

Klarman Hall, Harvard Business School

The 2024 President's Innovation Challenge Awards Ceremony is the Harvard Innovation Lab's annual celebration of innovation, community, and entrepreneurship. We'll hear live pitches from 25 finalist ventures and reveal which will receive a share of \$515,000 in funding, courtesy of the Bertarelli Foundation.

Learn more and register to attend [here](#).

## ONGOING OPPORTUNITIES & RESOURCES



## Outdoor Intramural Leagues

Competitive soccer **will play on Mondays starting at 5pm and 6pm.**

For-fun soccer **will play on Wednesdays starting at 5pm and 6pm.**

The ultimate frisbee league **will play on Tuesdays and Thursdays starting at 5pm and 6pm.**

To sign up email [gradims@fas.harvard.edu](mailto:gradims@fas.harvard.edu).



## ALUMNI

### Alumni Engagement Tip of the Month

Want to learn more about the experience of being an alum?

Come to the [Alumni Opportunities Fair](#) on April 25th from 11:30am – 4pm in GCC E1-3!



### Increased Prayer Room Capacity for Ramadan

To ensure that there is enough prayer space here on the HGSE campus for all who celebrate the holy month of Ramadan, the school is making additional prayer space available for the month.

Longfellow Hall, Room G011 (on the ground floor) has been designated as a prayer space for the month of Ramadan. The space will be available and accessible during all Longfellow Hall open hours.



## BARRIERS TO ACCESS FORM

Please use this form to notify us if you are unable to fully participate in the HGSE community because of one or more of your identities (such as race, ethnicity, gender identity, sexuality, socioeconomic status, disability, religious beliefs, or other.) *This could include barriers related to disability, programmatic concerns, or issues of inclusion.*

We will share the necessary information to the appropriate campus partners so that the barrier(s) may be assessed as soon as possible. However, this form is NOT intended for emergencies or to request student accommodations.

<https://bit.ly/hgsebarrierstoaccess>



## Barriers to Access Form Launch

We're happy to announce the launch of ODEI's [Barriers to Access Form](#), which will help us to ensure that the HGSE campus and its digital presence is available and accessible to all - faculty, staff, students, alumni, and visitors. Please use this form to notify us if you are unable to fully participate in the HGSE community because of one or more of your identities (such as race, ethnicity, gender identity, sexuality, socioeconomic status, disability, religious beliefs, or other). *This could include barriers related to disability, programmatic concerns, or issues of inclusion.*

We will share the necessary information to the appropriate campus partners so that the barrier(s) may be assessed as soon as possible.

However, this form is NOT intended for emergencies (contact Operations at (617) 495-5711) or to request student accommodations (Email [hgsesupport@gse.harvard.edu](mailto:hgsesupport@gse.harvard.edu) with questions).

Please feel free to reach out to Dorie Campbell at [dorie\\_campbell@gse.harvard.edu](mailto:dorie_campbell@gse.harvard.edu) with any questions.



## Student Discount on Harvard Education Press Books

HGSE students receive a 30% discount on all HEP books when using promo code HGSET at checkout on the [HEP website](#).

Newly released titles include:

- *#BlackEducatorsMatter*,
- *Emotional Intelligence for School Leaders*,
- *Education Lead(Her)ship*



Mindfulness for Students at the Center for Wellness and Health Promotion

As we start the new semester here at [CWHP](#), we are excited to offer a variety of mindfulness programs to support your wellbeing. Subscribe to the monthly newsletter [here](#) for more information on wellness offerings, classes, and workshops!

A promotional graphic for WAGs (Work Accountability Groups). It has a dark background with a light-colored text box on the left. The text in the box reads: "WAGs" in large white letters, "Join Student Support Services Academic Coaches in our weekly WORKING ACCOUNTABILITY GROUPS!" in smaller white letters, and "More information and Zoom links on the Hub." at the bottom. To the right of the text is a small image of a black dog sitting on a laptop keyboard.

Work Accountability Groups

Student Support Services hosts weekly Work Accountability Groups (WAGs) on Zoom. These accountability groups will hold space for students to gather and work in a supportive environment. Each WAG is 2 hours long and they are hosted multiple times throughout the week.

For more information and to join, and please [visit here](#).

## RELIGIOUS RESOURCES



Harvard Chaplains

Harvard Chaplains

The Harvard Chaplains, a professional community of more than thirty chaplains, represent many of the world's religious, spiritual, and ethical traditions, and share a collective commitment to serving the spiritual needs of the students, faculty, and staff of Harvard University. Learn more on the [Chaplain website](#).



#### Prayer Space on the HGSE Campus

Longfellow 214 is a dedicated prayer space here on the HGSE campus. Recognizing that not all buildings are open during the weekends, Gutman 440 has been reserved as prayer space on Saturday and Sundays, during regular Library hours.



#### The Memorial Church of Harvard University

The Memorial Church of Harvard University, part of a [vibrant interfaith network of Harvard](#), is an interdenominational Protestant church in the midst of Harvard Yard that serves as a place of spiritual refuge to the entire community. “MemChurch” stands opposite Widener Library as a visible reminder of the historical and spiritual heritage that has sustained Harvard for nearly four centuries. In addition to our [regularly scheduled services](#), we also offer a variety of [programming](#) for students, adults, and children.



#### Harvard Hillel

[Harvard Hillel](#) is a Jewish home on campus that seeks to:

- Welcome students to experience the variety of Jewish identity, tradition, practice, values, culture, and community.
- Inspire and enable Jewish connection, celebration, and action.
- Prepare students to join, create, shape, and lead Jewish communities; strengthen the Jewish people, and live proud Jewish lives.
- Share Jewish sources, traditions, ideas, and innovations, and their relevance in our world.
- Forge connection and engagement with the State of Israel.
- Foster friendship in a nurturing and refreshing sanctuary amid the stresses of student life.

- Engage the unique opportunities of Harvard and make Jewish thought and culture integral in the life of the University.



**Please Note:** In addition to student events and resources, the HGSE Weekly Newsletter is the official communication channel for important information regarding Commencement.

