

# — HGSE — Weekly

Office of  
Student Affairs



Monday, February 12, 2024

## WHAT YOU NEED TO KNOW

- [Academic Coaching](#)
- [Accessibility and Accommodations](#)
- [Connecting with OSA Virtually](#)
- [Quick Links](#)
- [Yoga and Mindfulness](#)
- [Work Accountability Groups](#)
- [I Notice/I Care Form](#)
- [Food Insecurity Resources / Clothes & Furniture Resources](#)
- [Support Resources in Times of Crisis](#)

## HIGHLIGHTED ANNOUNCEMENTS



### BARRIERS TO ACCESS FORM

Please use this form to notify us if you are unable to fully participate in the HGSE community because of one or more of your identities (such as race, ethnicity, gender identity, sexuality, socioeconomic status, disability, religious beliefs, or other.) *This could include barriers related to disability, programmatic concerns, or issues of inclusion.*

We will share the necessary information to the appropriate campus partners so that the barrier(s) may be assessed as soon as possible. However, this form is NOT intended for emergencies or to request student accommodations.

<https://bit.ly/hgsebarrierstoaccess>



### Barriers to Access Form Launch

We're happy to announce the launch of ODEI's **Barriers to Access Form**, which will help us to ensure that the HGSE campus and its digital presence is available and accessible to all - faculty, staff, students, alumni, and visitors. Please use this form to notify us if you are unable to fully participate in the HGSE community because of one or more of your identities (such as race, ethnicity, gender identity, sexuality, socioeconomic status, disability, religious beliefs, or other). *This could include barriers related to disability, programmatic concerns, or issues of inclusion.*

We will share the necessary information to the appropriate campus partners so that the barrier(s) may be assessed as soon as possible.

However, this form is NOT intended for emergencies (contact Operations at (617) 495-5711) or to request student accommodations (Email [hgsesupport@gse.harvard.edu](mailto:hgsesupport@gse.harvard.edu) with questions).

Please feel free to reach out to Dorie Campbell at [dorie\\_campbell@gse.harvard.edu](mailto:dorie_campbell@gse.harvard.edu) with any questions.

**PLEASE RSVP BY THIS Friday, February 16**



### **Black History Month Dinner Celebration for HGSE Students, Faculty, and Staff**

**Friday, February 23, 4PM-6PM EST**

Gutman Conference Center

[Please RSVP](#)

February is Black History Month, a time to celebrate the achievements and contributions by African Americans to the betterment of American society; a time for recognizing their central role in U.S. history. We would like to invite you to join the celebration on February 23rd!

*Sponsored by the Office of Student Affairs & the Office of Diversity, Equity, and Inclusion.*

## **THIS WEEK**

**Monday, February 12, 12PM-1PM EST**



### **Stop by the Mindfulness 101 Workshop!**

**Gutman 305**

Mindfulness is practicing moment-by-moment awareness of our thoughts, feelings, bodily sensations, and our surrounding environment with curiosity, kindness, and self-compassion. This experiential workshop will introduce the foundational skills of mindfulness through conceptual overview, guided sitting meditation, and group reflection & discussion. No prior meditation experience necessary. See how mindfulness can help you manage your stress this semester!

Light refreshments will be available.

*Presented by the Harvard Center for Wellness & Health Promotion.*

**Monday, February 12, 12PM-1PM EST**



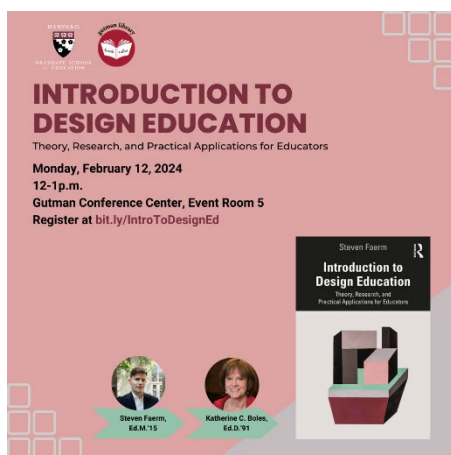
## **Crafting your Cover Letter (CSO Brown Bag Lunch Series)**

**Larsen 106 and Zoom**

Cover letters explain concisely why you're the ideal fit for a specific opportunity. Bring your lunch and learn how to write tailored cover letters that will help you stand out in applications or search inquiries.

[Register through the Hub!](#)

**Monday, February 12, 12PM-1PM EST**



## **Gutman Library Book Talk: Introduction to Design Education**

**Gutman Conference Center E5**

Author Steven Faerm, Ed.M.'15, is Associate Professor of Fashion at Parsons School of Design. He will be joined in conversation by Katherine C. Boles, Ed.D.'91, Senior Lecturer on Education (1995-2018) at the Harvard Graduate School of Education.

[Register here.](#)

**Tuesday, February 13, 12PM EST**



## **Balancing Act: Nurturing Your Well-being as a Family Caregiver**

Join Dr. Allison Applebaum (a clinical psychologist and an expert in supporting family caregivers) and Jill McNamara, LICSW (General Manager of Senior Care at Care.com), for a webinar which will provide a compassionate forum for the worries and questions many family caregivers have. Wherever you are on your caregiving journey, you'll learn new tools and find validation and support.

*These Care Conversations webinars are free to attend, and a recording will be shared afterwards.*

[Register here.](#)

**Tuesday, February 13, 2:30PM-4PM EST**



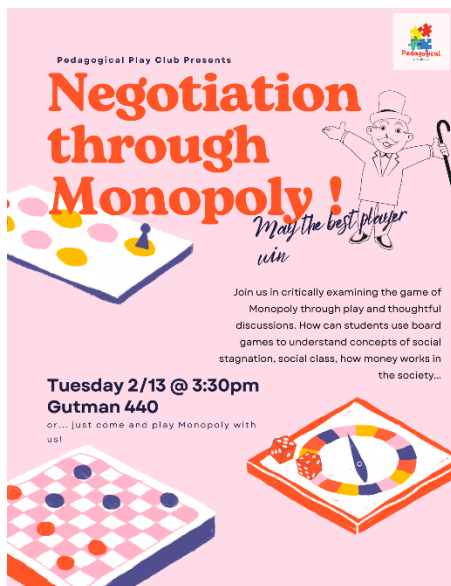
## EdEthics Normative Case Discussion

### Longfellow 207

EdEthics helps educators and policy makers explore ethical dilemmas in schools through short, accessible normative case studies. Join us for an upcoming discussion on the case "The Paradoxes of an Open Classroom."

Snacks provided! We will be discussing a case about how the limits of students' speech in classrooms. Email [jhauver@g.harvard.edu](mailto:jhauver@g.harvard.edu) for a copy of the case.

**Tuesday, February 13, 3:30PM EST**



## Negotiation through Monopoly

### Gutman 440

Come join student organization Pedagogical Play Club in critically examining the game of Monopoly through play and thoughtful discussions. See how can students use board games to understand concepts of social stagnation, social class, how money works in the society... or just come and play Monopoly!

For more information, contact [Jessica Cai](#).

**Wednesday, February 14, 10AM-4PM EST**

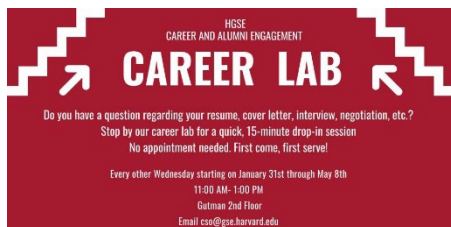


## Valentine Making with the HGSE Student Council

### Gutman Library Lobby

Join the HGSE Student Council in spreading some joy this Valentine's Day! Swing by the lobby of the Gutman Library to craft valentines for your friends and loved ones.

**Wednesday, February 14, 11AM-1PM EST**



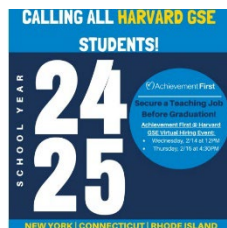
## Career Lab (Happens every other Wednesday)

### Gutman 2nd Floor Suite

Do you have a question for Career Services regarding your resume, cover letter, interview, negotiation, etc.?

Stop by our career lab for a quick, 15-minute drop-in session, no appointment needed! It'll be first come, first serve!

**Wednesday, February 14, 12PM-1PM EST**



## Intro to Achievement First + Education Job Search Tips!

Join Achievement First professionals as they dive deep into the ins and outs of a successful education job search and discuss their open Lead Teacher opportunities in New York, Connecticut, and Rhode Island! Achievement First is a growing network of 41 non-profit, high-performing K-12 public charter schools in Connecticut, New York, and Rhode Island.

To learn more and to register, [visit the Hub](#).

**Thursday, February 15, 12PM-1PM EST**

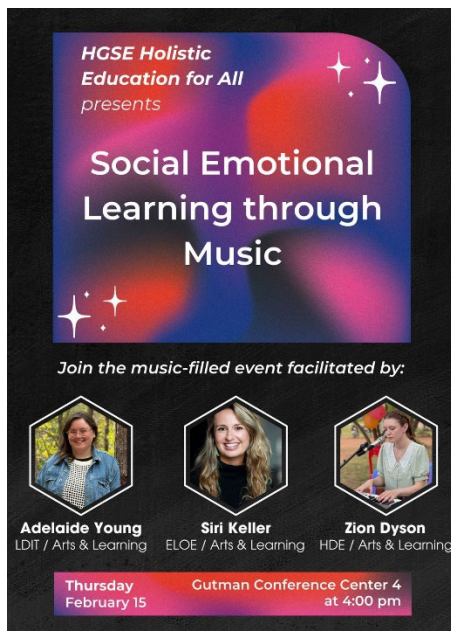


## Author Lightning Talks

Register: <https://bit.ly/hgselightingtalks>

Interested in writing a book or already a published author? Join us to hear from several HGSE alumni who have written and published books across different genres. They will share more about their work, process, and experiences through 10-minute "lightning talks", with an opportunity for audience Q&A.

Thursday, February 15, 4PM EST



## HGSE Holistic Education for All | Launch Event

### Gutman Conference Center 4

Join student organization HGSE Holistic Education for All for their first event, which will focus on Social Emotional Learning through MUSIC, facilitated by HGSE students!

Join this music-filled event by [registering here](#). For more information contact [Vyankatesh Kharage](#).

Thursday, February 15, 6PM EST





## Black History and Buddhism

Gutman 404

Join student organization HGSE SGI Nichiren Buddhism Campus Club for an exploration of icons in Black history and their engagements with SGI Nichiren Buddhism.

For more information, contact [Ken Shintaku](#).

**SUBMIT YOUR RESUME BY Thursday, February 15**



## Resume Books for Upcoming Career Fairs

Want to get visibility with potential employers? **Upload your resume to the Resume Books!** These books will be shared with organizations who attend the Spring Career Fairs and any employer who posts an internship on the Hub. Please note: resumes will not be visible to other students.

**The deadline for submitting your resume is February 15.**

[Click here](#) for the Career Fairs Resume Book.

**Friday, February 16, 5PM EST**



## Social-Emotional Learning Association Meet & Greet Mixer

We will kick off the HGSE Social-Emotional Association (SELA) with a meet & greet mixer! Join us to connect with other people excited about SEL, some fun activities & free appetizers!

[Sign up here to join.](#)

For more information, contact [Helene Wittek](#). *SELA is an officially recognized student organization at HGSE.*

**Friday, February 16, 6PM EST**



## HGSE Hangouts at the Queen's Head Pub

### Queen's Head Pub

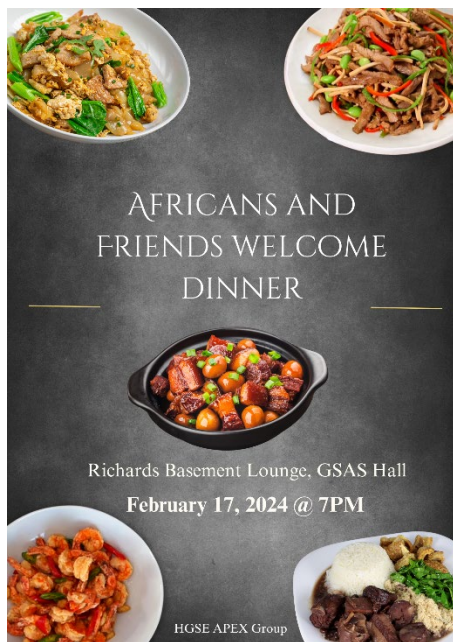
**45 Quincy Street, Cambridge** – located in the same building as Sanders Theater - below the entrance to Annenberg Hall (the first-year dining hall)

HGSE Hangouts are back for the spring semester! Join your fellow HGSE students at the Queen's Head Pub on the dates listed below to connect over food and drinks. Food will be served on a first come, first served basis. Beer, wine, and non-alcoholic beverages will be available for purchase. The event begins at 6:00PM.

HGSE Hangouts will take place on February 16th, February 23rd, March 8th, March 29th, April 5th, & April 12th.

*If you require accessibility accommodations, please contact Andrea Le at [andrea\\_le@gse.harvard.edu](mailto:andrea_le@gse.harvard.edu) at least 48 hours in advance.*

**Saturday, February 17, 7PM EST**



## African and Friends Welcome Party

### **Richards Basement Lounge, GSAS Hall**

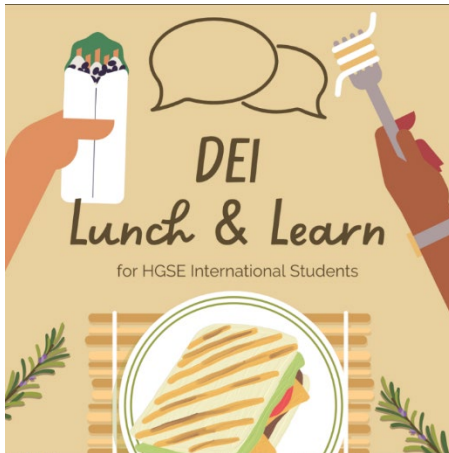
The student organization, HGSE Africa Policy Exchange, is celebrating and welcoming Africans and friends to the spring term in an atmosphere filled with delicious African cuisine, refreshing drinks, lively games, and fun activities. It will be a party one to remember!

For more information, contact [Martin Wairimu](#).

## FUTURE EVENTS AND OPPORTUNITIES



Tuesday, February 20, 11:45AM-1PM EST



## DEI Lunch & Learn for International Students

Gutman Conference Center 4

[Register Here](#)

The DEI Lunch & Learn series is a space for HGSE international students to convene, connect, and explore topics of diversity, equity, and inclusion in a brave and supportive space. Conversations will be facilitated by **Dr. Junlei Li**, HGSE faculty member and co-chair of the HDE Program, **Andrea Le**, Associate Director of Community Building and International Student Support, and **Annie Lewis**, Program Coordinator for the International Student Experience. During our next lunch, we will use a case study to explore thoughtful ways to communicate and ask questions when encountering difficult situations. [Please RSVP](#) if you plan to attend. Lunch will be served.

*If you require accessibility accommodations, please contact Annie Lewis at [annie\\_lewis@gse.harvard.edu](mailto:annie_lewis@gse.harvard.edu) at least 48 hours in advance.*

Tuesday, February 20, 4PM-5PM EST



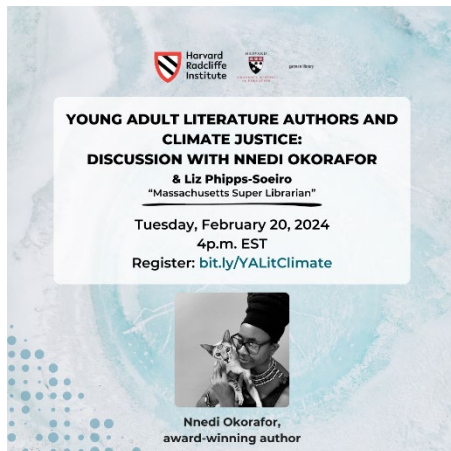
## Black Educators Matter

Join Harvard Education Press authors **Darrius A. Stanley** and **Tracey A. Benson** as they discuss the importance of Black educators, the impact they have on students of color as well as the entire school community, and the challenges they may face and the ways school leadership can retain and support them. The discussion will be moderated by HEP's executive director, Jessica Fiorillo.

[Register here.](#)

*Stay informed about webinars and new books in education by subscribing to Harvard Education Press's [e-newsletter](#).*

Tuesday, February 20, 4PM-5PM EST



## Young Adult Literature Authors and Climate Justice: Discussion with Nnedi Okorafor

Award-winning author Nnedi Okorafor will converse with "Massachusetts Super Librarian" Liz Phipps-Soeiro on how writing, reading, and teaching books and comics with themes of climate change and climate justice can encourage young people to learn and think about these issues, while demonstrating the powerful impact of the arts and literature in our communities.

[Register here.](https://bit.ly/YALitClimate)

**Tuesday, February 20, 4PM-5PM EST**

By All Means Senior Fellows Cross-Sector Leadership Series  
Neighborhoods as the Unit of Change



**Host: Richard Raya**

Chief Strategy Officer, Mission Economic Development Agency;  
EdRedesign By All Means Senior Fellow

**Tuesday, February 20th  
4:00pm - 5:00pm EST**

## By All Means Senior Fellows Cross-Sector Leadership Series with Richard Raya: Neighborhoods as the Unit of Change

Join [the EdRedesign Lab](https://www.edredesignlab.org/) for a session with Richard Raya — By All Means Senior Fellow and Chief Strategy Officer at Mission Economic Development Agency — as we explore the transformative power of neighborhoods as the fundamental unit of change.

In an era where communities play a pivotal role in shaping our collective future, Richard will delve into the importance of fostering localized initiatives and collaborations to drive positive social impact drawing from insights and lessons from The Mission Promise Neighborhood. The presentation will be followed by Q&A.

[Register here.](https://www.edredesignlab.org/)

**Wednesday, February 21, 12PM-1PM EST**



## HUECU Webinar: Money Personality & Improving Money Habits

Knowing your "money personality" can help you shift your mindset and set you on the path to reaching your financial goals. Learn more at this GreenPath Financial Wellness presentation, sponsored by the Harvard University Employees Credit Union.

[Register for the Zoom here.](https://www.huecu.org/)

**FOURTH THURSDAY OF THE MONTH: Thursday, February 22, 5PM-6PM EST**



## QUEER+space

**Harold Amos Student Lounge** (Longwood Campus)  
[TMEC 422](#)

An affinity space for those who are LGBTQIA2S+. Queer encompasses all the ways people are non-cisgender and/or non-heterosexual.

Open to undergrad/grad students, staff, postdocs, and faculty. Snacks will be provided! Hosted by TransHarvard and LGBTQ@GSAS.

For more information contact  
[harvardtranscommunity@gmail.com](mailto:harvardtranscommunity@gmail.com).

**Monday, February 26, 12PM-1PM EST**



## CSO Brown Bag Lunch: Branding

**Larsen 106**

Building your brand to describe yourself is an ongoing process. Learn how to harness the power of LinkedIn and other media to promote your personal and professional identity to your network and potential employers.

[Sign up here.](#)

**Monday, February 26, 5:30PM-7:30PM EST**



## HGSE International Potluck

**Riverview Commons Lounge, Smith Campus Center**  
 • [Register here](#)

Celebrate the diversity of the HGSE community by attending our International Potluck on Monday, February 26! Attendance is free; you simply need to bring one dish to share with others at the event! In traditional potluck style, all dishes will be placed in a central area and attendees will be free to sample what others have brought to the event. Home cooked dishes are permitted and encouraged!

Tuesday, February 27, 12PM-1PM EST



### HGSE Industry Coffee Chat: Talent Leaders

Register: <https://bit.ly/talentleaderscoffeechat> (You will receive a Zoom confirmation email with unique credentials for logging in 24-48 hours before the event)

Join us for a discussion about the talent/hiring landscape, including current trends and how candidates can stand out, and to learn from alums who are talent leaders. This session will be facilitated by HGSE Alumni Council member **Ryan Romaneski, Ed.M. '13**, Senior Director of Talent and Teamwork at Ednovate.

Please come prepared to have your camera on and join the discussion!

Tuesday, February 27, 5PM-6:30PM EST

## ASKWITH education forum

### Askwith Education Forum: K-12 Education in Polarized Times

#### Askwith Hall

As the 2024 presidential election kicks into high gear, educators may have to navigate not just civics lessons but also the rough waters of book bans, instructional challenges, and contentious school board meetings. In this Askwith Education Forum, we'll explore education's role and mission in divided or politicized times.

[RSVP here.](#)

Thursday, February 29 through Saturday, March 2



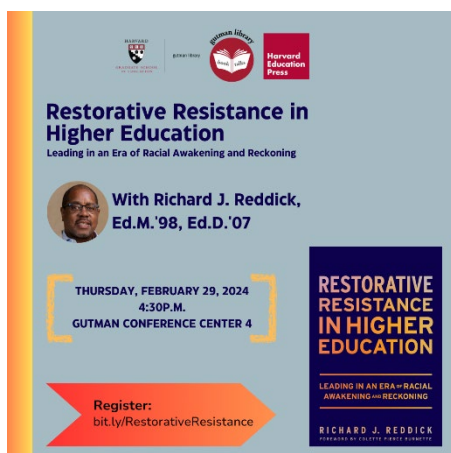
### HGSE Alumni of Color Conference (AOCCE)

AOCCE is kicking things off early this year; there's just too much good stuff going on! So, if you are arriving early/are in the area, join us on **Thursday, February 29**, for a Pre-conference Social from **6:00 to 8:00pm** in Gutman Library's Reading Area.

Make sure you are prepared to join us early(ish) **Friday, March 1**, for AOCCE's Leadership Team Welcome at **10:00am**, followed by Presentation Sessions from 10:40am to 12:50pm, Dean Long's remarks at 3:00pm, and this year's Opening **Keynote Speaker Dr. Bettina Love**. [Register here.](#) You don't want to miss it!

Stop by Gutman Library's lobby and reading area to check out AOCC's Gallery "A Celebration of Healing, Resistance, Solidarity, and Joy". On display now!

**Thursday, February 29, 4:30PM-5:30PM EST**



## Gutman Library Book Talk - Restorative Resistance in Higher Education

### Gutman Conference Center E4

In *Restorative Resistance in Higher Education*, diversity researcher and educator Richard J. Reddick, Ed.M.'98, Ed.D.'07 shares the wisdom gained from three decades of diversity, equity, and inclusion (DEI) work in educational settings. Reddick centers DEI efforts as challenging yet essential components of college life, recognizing campus environments not just as mirrors reflecting societal values and biases but also as crucibles for social change.

[Register here.](https://bit.ly/RestorativeResistance)

**Friday, March 1, 12PM-2PM EST**



## Alumni in Residence

Register: [bit.ly/claudiaespinosaair](https://bit.ly/claudiaespinosaair)

Meet Dr. Claudia Espinosa, Ed.M. '19, the visionary Founder and Executive Director of Latinas On the Verge of Excellence - L.O.V.E. Mentoring.

Utilize Dr. Espinosa's expertise by booking a 20-minute meeting with her on campus.

Questions? Email [alumserv@gse.harvard.edu](mailto:alumserv@gse.harvard.edu).

**DEADLINE Friday, March 1, 11:59PM EST**





## The Appian Way

The Appian Way is excited to [accept](#) original content from fellow HGSE students.

The types of accepted content include written submissions, statistics graphs, art work, and videos.

All submissions must be 1,000 words or less and must be original. Please email Tiffany MacLennan ([tiffanymaclennan@gse.harvard.edu](mailto:tiffanymaclennan@gse.harvard.edu)) or King Adjei-Frimpong ([kadjeifrimpong@gse.harvard.edu](mailto:kadjeifrimpong@gse.harvard.edu)) for any questions.

[Submit your original content here!](#)

Friday, March 4, 12PM-1PM EST



## Gutman Library Book Talk: America's Hidden Economic Engines

Gutman Conference Center E3 and [on Zoom](#)

Robert B. Schwartz and Rachel Lipson spotlight community and technical colleges as institutions uniquely equipped to foster more equitable economic growth across America's regions. Schwartz and Lipson demonstrate that these colleges are the best-placed institutions to reverse the decades-long rise in US economic inequality by race, class, and geography.

[RSVP today.](#)

Thursday, March 7, 12PM-1:30PM EST



## Anti-Stress Event with Sasha!

Gutman 305

Having a ruff day? Dog-gone midterms hounding you? We've got just what the dogtor ordered! **Sasha, the Community Engagement Dog, is coming to HGSE!** It's gonna be pawesome.

You won't want to miss this oppawtunity to treat yourself to a puppy hug!

Until then, you can enjoy Sasha on her Instagram: [@Sasha\\_hupd.](#)

Thursday, March 7 through Saturday, March 9



### Burning Refuge: The Inaugural Social-Spiritual Liberation Conference at Harvard Divinity School

[Register now.](#)

In March an exciting and radical conference will host its inaugural offering at Harvard Divinity School to convene critical and interdisciplinary Buddhist scholarship, activism, and arts to chart a path forward into true social-spiritual liberation.

Conference themes include Buddhism and Race, White Supremacy, and Colonialism; Sex, Gender & Queer/Trans Being; Capitalism & Labor; Technology, AI & Meta-Narratives of Progress; Environmental Justice, Animal Liberation & Deep Ecology.

APPLY BY Monday, March 10



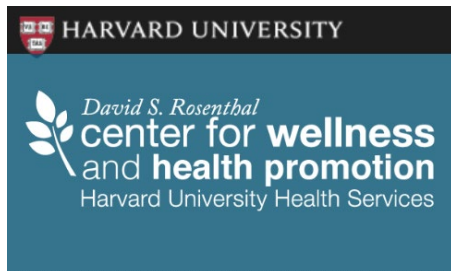
### Spring 2024 Semester HGSE Ed.M. Student Conference Fund Application

HGSE is committed to supporting the academic and professional development of students both within and outside of the classroom. The Student Conference Fund seeks to help defray the cost of travel and registration fees for Ed.M. students who are presenting or attending conferences. Students who are presenting are eligible for up to \$750 in funding; students who are attending are eligible for up to \$500 in funding. All conferences must align with the mission of HGSE.

Spring semester applications are **now open for conferences that take place between 1/3/2024 and 5/12/2024**. The spring semester **deadline to apply is Monday, March 10th**.

[Learn more and apply here.](#)

## ONGOING OPPORTUNITIES & RESOURCES



### Free Mindfulness Class Offerings with the CWHHP for Spring 2024

Interested in developing more self-compassion? Want to be able to focus and be more present in your life? Join one of the Introduction to Mindfulness classes (formerly Koru) with the CWHHP. In-person and virtual options through the week. Classes start the week of Feb 5th.

[Learn more and register today!](#)



### Student Discount on Harvard Education Press Books

HGSE students receive a 30% discount on all HEP books when using promo code HGSET at checkout on the [HEP website](#).

Newly released titles include:

- *Social Justice Art Education*,
- *Emotional Intelligence for School Leaders*,
- *Bullying and Cyberbullying, 2nd Edition*



### The Harvard University Peer Coaching Initiative

The Harvard University Peer Coaching Initiative (HUPCI) is non-competitive opportunity for Harvard students and researchers to:

- (1) learn and practice core interpersonal skills,
- (2) build a high-trust relationship with an effective thought partner,
- (3) and stay more centered and intentional during their time at Harvard.

A Culture Lab Innovation Fund winner, it is also a chance to help build a more inclusive community at Harvard. Past participants say "this is not a high time commitment, but very high value."

Learn more and register at [www.convu.com/hupci](http://www.convu.com/hupci).



### Mindfulness for Students at the Center for Wellness and Health Promotion

As we start the new semester here at [CWHP](#), we are excited to offer a variety of mindfulness programs to support your wellbeing. Subscribe to the monthly newsletter [here](#) for more information on wellness offerings, classes, and workshops!

# WAGs

Join Student Support Services Academic Coaches in our weekly **WORKING ACCOUNTABILITY GROUPS!**

More information and Zoom links on the Hub.



### Work Accountability Groups

Student Support Services hosts weekly Work Accountability Groups (WAGs) on Zoom. These accountability groups will hold space for students to gather and work in a supportive environment. Each WAG is 2 hours long and they are hosted multiple times throughout the week. WAGs will start up in the fall semester, so stay tuned for the official schedule. For more information and to join, and please [visit here](#).

## RELIGIOUS RESOURCES



### Harvard Chaplains

#### Harvard Chaplains

The Harvard Chaplains, a professional community of more than thirty chaplains, represent many of the world's religious, spiritual, and ethical traditions, and share a collective commitment to serving the spiritual needs of the students, faculty, and staff of Harvard University. Learn more on the [Chaplains website](#).



#### Prayer Space on the HGSE Campus

Longfellow 214 is a dedicated prayer space here on the HGSE campus. Recognizing that not all buildings are open during the weekends, Gutman 440 has been reserved as prayer space on Saturday and Sundays, during regular Library hours.



### **The Memorial Church of Harvard University**

The Memorial Church of Harvard University, part of a [vibrant interfaith network of Harvard](#), is an interdenominational Protestant church in the midst of Harvard Yard that serves as a place of spiritual refuge to the entire community. “MemChurch” stands opposite Widener Library as a visible reminder of the historical and spiritual heritage that has sustained Harvard for nearly four centuries. In addition to our [regularly scheduled services](#), we also offer a variety of [programming](#) for students, adults, and children.



### **Harvard Hillel**

[Harvard Hillel](#) is a Jewish home on campus that seeks to:

- Welcome students to experience the variety of Jewish identity, tradition, practice, values, culture, and community.
- Inspire and enable Jewish connection, celebration, and action.
- Prepare students to join, create, shape, and lead Jewish communities; strengthen the Jewish people, and live proud Jewish lives.
- Share Jewish sources, traditions, ideas, and innovations, and their relevance in our world.
- Forge connection and engagement with the State of Israel.
- Foster friendship in a nurturing and refreshing sanctuary amid the stresses of student life.
- Engage the unique opportunities of Harvard and make Jewish thought and culture integral in the life of the University.



**Please Note:** In addition to student events and resources, the HGSE Weekly Newsletter is the official communication channel for important information regarding Commencement.