

— HGSE — Weekly

Office of
Student Affairs



Monday, November 13, 2023

WHAT YOU NEED TO KNOW

- [Academic Coaching](#)
- [Accessibility and Accommodations](#)
- [Connecting with OSA Virtually](#)
- [Quick Links](#)
- [Yoga and Mindfulness](#)
- [Work Accountability Groups](#)
- [I Notice/I Care Form](#)
- [Food Insecurity Resources / Clothes & Furniture Resources](#)
- [Support Resources in Times of Crisis](#)

HIGHLIGHTED ANNOUNCEMENTS

Friday, March 1 & Saturday, March 2, 2024



Save the date! 2024 HGSE Alumni of Color Conference (AOCC)

Our power is rooted in our connection to one another and our ability to organize across differences. History has demonstrated how solidarity movements, rooted in shared humanity and joy, have propelled us towards justice because none of us are free until all of us are free. When resisting multiple forms of oppression, embodying joy and solidarity is not a singular act—it is a discipline, a praxis, and a way of being in the world.

This year's conference theme, **Embracing Resistance, Solidarity, and Joy**, invites participants to consider: What is the current moment asking of us? How do we center joy in the fight for justice? How do we embrace and exercise resistance, solidarity, and joy in our collective struggles for liberation?

PURCHASE YOUR PASS BY Tuesday, January 9, 2024



MBTA Spring 2024 Semester Passes

The HGSE Office of Student Affairs is pleased to share that we are able to offer MBTA Semester passes at a 25% reduced rate for all students. To receive this discount, students must purchase the pass for the entire four-month period (February 1st through May 31st), through the HGSE marketplace portal.

There are a number of different pass types available, so be sure to check which pass would best fit your needs. For pass descriptions, please visit the [MBTA website](#).

As a reminder, all purchases are final sale and are non-refundable.

To place your order, [click here](#).

The **deadline for ordering** is **Tuesday, January 9 at 11:59pm EST**.

THIS WEEK

Monday, November 13 - Wednesday, November 22



HGSE Winter Clothes Drive

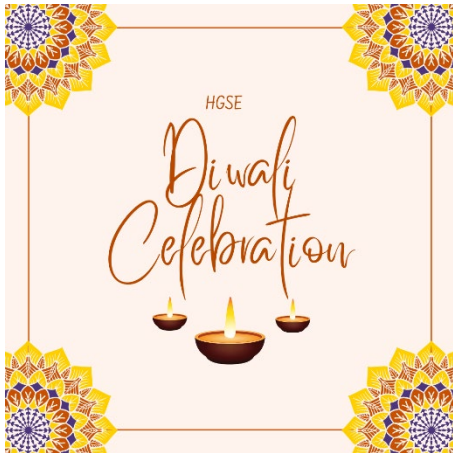
Give back to the Cambridge community! All donations will support Cambridge Rindge and Latin (CRLS) students in need!

New or gently used, in all sizes: winter coats, sweaters, shirts, pants, socks gloves, boots, scarves and hats!

Drop off items at Gutman Library.

Questions? Email cquanzing@gse.harvard.edu.

Monday, November 13, 6PM EST



Diwali Celebration

Gutman Conference Center

[Register to attend.](#)

Please join us for food, music, performances, and activities in celebration of Diwali! HGSE students, staff, and faculty are invited to attend, learn, and be a part of this festival of light.

Monday, November 13, 6PM EST



The Appian Way

Larsen 615

HGSE's magazine for students, by students is being launched for the 2023-2024 year. Join us on Nov 13 to learn more about the Appian Way including publication and volunteer opportunities.

Also, enjoy some pizza with your peers! Any questions can be directed to Tiffany MacLennan at tiffanymaclennan@gse.harvard.edu.

Tuesday, November 14, 2PM-3:30PM EST



EdEthics Normative Case Study Discussion

Gutman Conference Center 3

EdEthics helps educators and policy makers explore ethical dilemmas in schools through short, accessible normative case studies. Join us for an upcoming discussion on the case "Taking the Action out of Civics," Snacks provided!

Tuesday, November 14, 4PM EST



A Conversation with Ruth J. Simmons

Join the Harvard Radcliffe Institute for a conversation between scholars and university leaders Ruth J. Simmons, former president of Prairie View A&M University, Brown University, and Smith College, and Tomiko Brown-Nagin, Dean of Harvard Radcliffe Institute.

They will discuss her personal journey, her pioneering work researching and sharing publicly universities' historical ties to slavery, and her perspectives on the future of Historically Black Colleges and Universities (HBCUs).

[Register here.](#)

Tuesday, November 14, 4:30PM EST

axim collaborative

AI & Education

Inclusive Innovation for Student Success

We invite you to join us for a free and open community event on the future of AI & Education.
Please use the QR code below to reserve your seat.

SPEAKERS

Sal Khan
Khan Academy

Cynthia Breazeal
MIT Media Lab

Bridget Terry Long
Harvard Graduate School of Education

EVENT DETAILS
Nov 14, 2023
4:30pm - 6pm
Sanders Theatre
45 Quincy Street
Cambridge, MA

RSVP WITH QR CODE

AI & Education: Inclusive Innovation for Student Success

**Sanders Theater
45 Quincy Street Cambridge, MA**

Join us for a discussion of the possibilities of harnessing AI to create transformative opportunities for teachers and learners. Sal Khan, of Khan Academy, Cynthia Breazeal, of MIT Open Learning and MIT Media Lab, Bridget Terry Long, of Harvard Graduate School of Education, will explore how generative AI could lead to transformative improvements in teaching and learning, student supports, and career success.

For tickets and more information, [click here](#).

Thursday, November 16, 11AM-12PM EST



JOIN OUR WEBINAR TO MAKE IT A HAPPY AND FINANCIALLY HEALTHY SEASON!

The holiday season can be full of joy, but also full of stress. In the upcoming holiday season has you feeling financially concerned, join our partners at GreenPath Financial for a webinar to learn how to maximize your dollars and create a memorable gift-giving season. We will help you create a plan to get yourself up for success and that this holiday season it's also for yours to come.

Thursday, November 16th: 11:00 AM - 12:00 PM

SCAN TO REGISTER!



Spread Joy & Save Money Webinar

The holiday season can be full of joy, but also full of stress. If the upcoming holiday season has you feeling financially concerned join our partners at GreenPath to learn how to spend without stressing your wallet!

[Register here.](#)

Hosted by the HGSE Financial Aid Office and GreenPath Financial Services.

Thursday, November 16, 12PM EST



Caring for Caregivers: A Conversation on Compassion

The holiday season is meant to be a time of joy, connection, and celebration. However, it can also be stressful if you're worried about the health of older loved ones, juggling caring for both children and seniors, or simply feeling overwhelmed by caregiving responsibilities. The good news? You're not alone. Let's talk about it.

Kate Washington, a family caregiver and author of "Already Toast," and Jody Gastfriend, LICSW and senior care expert, join us for a fireside chat about the unique challenges caregivers face during the holidays.

[Register here.](#)

Thursday, November 16, 6-7:30PM EST

HGSE Writer's Room Poetry Slam!

Gutman 305

Join HGSE Writer's Room for the first Poetry Slam!
Come showcase your poetry skills, learn about poetry,
and even write a poem. All levels of poets welcome.
There will be food, a poetry writing workshop, and a
poetry slam!

Perhaps you are a poet and you didn't even know it?!!

[RSVP.](#)

Thursday, November 16, 6PM EST

A Discussion on Buddhism's Approach to Peace

Larsen 214



The OSA Invites you to De-Stress with Cookie Decorating

Garden Room, Gutman 1st Floor

Stop by anytime between 2PM and 5PM to decorate cookies and decompress! Is there a sweeter way to end the week?

[RSVP here.](#)

Friday, November 17, 5PM-7:30PM EST



International Arts Lollapalooza

Gutman Library, 1st Floor

[Register to perform](#) or [register to attend](#).

The [International Arts Lollapalooza](#) is an annual event to celebrate HGSE's international and multicultural community through food, music, dancing, and performances. All students are welcome to sign up to perform or share their culture through art.

If you would like to perform or share, please fill out [this survey](#) by Wednesday, November 15 at 9:00AM. There is no need to be a professional performer to participate, and it is not confined to musical performances - poems, paintings, photography, etc. are welcome!

Saturday, November 18, 2PM-3:30PM EST



In the Whale: The Greatest Fish Story Ever Told

In the Whale is a feature-length film about, arguably, the greatest true fish story ever told. It's the account of a man who survived to tell the tale of being swallowed and then spit out by a whale.

A Q&A with filmmaker David Abel will follow the screening.

[Advance registration is required.](#)

Presented by the Harvard Museum of Natural History and the Harvard Museums of Science & Culture.

FUTURE EVENTS AND OPPORTUNITIES

Monday, November 20, 12PM-1PM EST



Tips for Surviving Winter in Cambridge & Hot Chocolate Bar

Larsen G06

Drop-in friendly/no RSVP required.

Join HGSE Ed.M. student Katie Filiakova for tips and tricks on how to survive the winter in Cambridge. Katie is excited to offer insight on how to stay warm and prioritize health and wellness during the winter months given her experience growing up in Russia and attending college in Maine.

A free hot chocolate bar will be offered at this event.

Tuesday, November 21, 11:30AM-1PM EST



HGSE Thanksgiving Luncheon

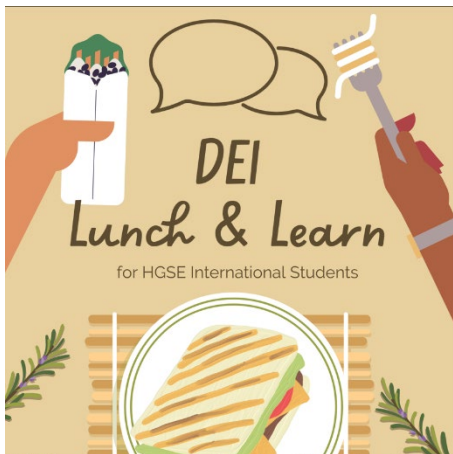
Gutman Café

[Register to attend.](#)

Please join us for a Thanksgiving meal with the HGSE community!

The lunch will include turkey, dressing, and all the fixings. Vegetarian, vegan, gluten-free, and dairy-free options will be available. This meal is free of charge for all current HGSE students, staff, and faculty. To ensure we have enough food to go around, we kindly request that you [RSVP](#). We hope to see you there!

Tuesday, November 28, 11:45AM-1PM EST



DEI Lunch & Learn for International Students

Gutman Conference Center 3

[Register here](#)

The DEI Lunch & Learn series is a space for HGSE international students to convene, connect, and explore topics of diversity, equity, and inclusion in a brave and supportive space. Conversations will be facilitated by **Dr. Junlei Li** (HGSE faculty member and co-chair of the HDE Program), **Andrea Le** (Associate Director of Community Building and International Student Support), and **Annie Lewis** (Program Coordinator for the International Student Experience).

During our next lunch, we will use various case studies to explore thoughtful ways to communicate and ask questions when encountering difficult situations. [Please RSVP](#) if you plan to attend. Lunch will be served.

If you require accessibility accommodations, please contact Annie Lewis at annie_lewis@gse.harvard.edu at least 48 hours in advance.

Wednesday, November 29, 10AM-12PM EST



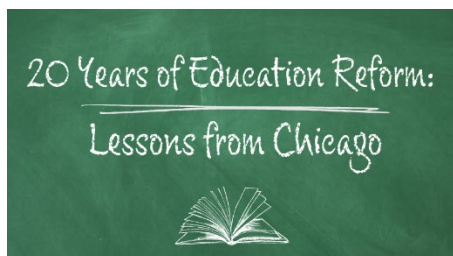
WELCOME TO
OUR NEW HOME
AT HGSE!

Gutman Second Floor Celebration

Academic Affairs, Student Services, and Library Teams invites you to celebrate with us and enjoy a hot chocolate bar!

Stop by anytime between 10AM and 12PM.

Wednesday, November 29, 5PM-6:30PM EST



Askwith Education Forum | 20 Years of Education Reform: Lessons from Chicago

Askwith Hall

How does a district sustain progress through leadership transition and turbulent times? We'll take a close look at 20 years of educational reform in the Chicago Public Schools (CPS) – the fourth largest district in the U.S. – with current and former CPS CEOs Pedro Martinez, Janice K. Jackson, and Arne Duncan, former U.S. Secretary of Education.

[Register here.](#)

Wednesday, November 29, 6PM-8PM EST



Ed
Ethics.

EdEthics Online Case Discussions

EdEthics creates case studies that explore ethical dilemmas that teachers, school and district leaders, and educational policy makers face. Join us for upcoming virtual discussions about brand new cases on **Wednesday, 11/29** and **Thursday, 12/14** from 6-8pm EST.

You can attend just one or both! Email seobrien@gse.harvard.edu to RSVP and receive a copy of the cases.

Friday, December 1, 6PM EST



HGSE Hangouts

45 Quincy Street, Cambridge – located in the same building as Sanders Theater - below the entrance to Annenberg Hall.

Join your fellow HGSE students at the Queen's Head Pub every Friday throughout the fall semester to connect over food and drinks. Food will be served on a first come, first served basis. Beer, wine, and non-alcoholic beverages will be available for purchase. The event begins at 6:00PM.

If you require accessibility accommodations, please contact Annie Lewis, at annie_lewis@gse.harvard.edu at least 48 hours in advance of the event.

Monday, December 4, 12PM-2PM EST



Alumni in Residence: Michelle Wantuch, Ed.M. '17

[Register here.](#)

Meet with **Michelle Wantuch, Ed.M. '17**, Senior User Researcher at Microsoft to discuss your career aspirations and ask burning questions. Students must register for a 20-minute timeslot in advance using [this form](#).

Please contact HGSE Alumni Engagement at alumserv@gse.harvard.edu with any questions.

Thursday, December 7, 12PM-1PM EST



HGSE Industry Coffee Chat: DEIB

[Register here.](#)

Attend to connect with HGSE alums and current students who work in or have interest in Diversity, Equity, Inclusion, and Belonging roles across different industries. This will be an active participation session to discuss the topics and questions that are top of mind for you. This panel will be moderated by Julian Braxton, Ed.M. '99.

Thursday, December 7, 2PM-4PM EST



Gingerbread House Competition

Gutman Conference Center 4-5

[Register here.](#)

The Office of Student Affairs invites you to celebrate the end of the fall semester with hot chocolate, snacks, and a gingerbread house decorating competition! All are welcome to join for food, fun, and camaraderie. To participate in the decorating competition, please assemble a team of up to 5 HGSE students to compete. We will provide you with the gingerbread house materials and decorations. The rest is up to you! Photos of the completed gingerbread houses will be shared with the HGSE community for voting. Each member of the winning team will receive an HGSE sweatshirt. [Please sign your team up here.](#)

Want to participate in this event but need to find team members? Please email annie_lewis@gse.harvard.edu.

APPLY BY Thursday, December 7, 11:59PM EST



2024 President's Innovation Challenge

The Harvard Innovation Labs is accepting applications for the 2024 President's Innovation Challenge. Student founders from all 13 Harvard schools are invited to apply by December 7 to show us how their startups can change the world. Founders will benefit from our robust innovation community, feedback from expert judges, and the chance to win a share of \$515,000 in non-dilutive funding from the Bertarelli Foundation.

[Student applications](#) are due December 7, 2023, at 11:59 p.m. ET.

ONGOING OPPORTUNITIES & RESOURCES



Submit Your Research to the HKS Student Policy Review

The HKS Student Policy Review is a student-run publication at Harvard Kennedy School that welcome submissions from across Harvard on timely policy issues. Submissions can be policy analyses, op-eds, or other type of articles focused on a specific policy area, and are reviewed on a rolling basis.

[Click here](#) for the submission portal.

Paid Behavioral Research Studies at the HBS Behavioral Lab (BeLab)

The Harvard Business School Behavioral Lab (BeLab) hosts a variety of in-person and online studies crafted by HBS researchers that study topics like negotiations, economic behaviors, and group interactions.

We invite participants for our in-person studies - the Design of Whistleblowing Programs and the 30-Minute Negotiation.

Follow this link to become a part of our participant pool and participate in these and many more studies:
https://hbs.sona-systems.com/student_new_user.aspx.



Alumni Engagement Tip

Join the Harvard Graduate School of Education (HGSE) group on LinkedIn to access the 8,000+ members and use the advanced search function on LinkedIn to find connections based on specific criteria (school, industry, region, etc.)



Mindfulness for Students at the Center for Wellness and Health Promotion

As we start the new semester here at [CWHP](#), we are excited to offer a variety of mindfulness programs to support your wellbeing. Subscribe to the monthly newsletter [here](#) for more information on wellness offerings, classes, and workshops!

WAGs

Join Student Support Services Academic Coaches in our weekly **WORKING ACCOUNTABILITY GROUPS!**

More information and Zoom links on the Hub.



Work Accountability Groups

Student Support Services hosts weekly Work Accountability Groups (WAGs) on Zoom. These accountability groups will hold space for students to gather and work in a supportive environment. Each WAG is 2 hours long and they are hosted multiple times throughout the week. WAGs will start up in the fall semester, so stay tuned for the official schedule. For more information and to join, and please [visit here](#).

RELIGIOUS RESOURCES



Harvard Chaplains

The Harvard Chaplains, a professional community of more than thirty chaplains, represent many of the world's religious, spiritual, and ethical traditions, and share a collective commitment to serving the spiritual needs of the students, faculty, and staff of Harvard University. Learn more on the [Chaplains website](#).



Prayer Space on the HGSE Campus

Longfellow 214 is a dedicated prayer space here on the HGSE campus. Recognizing that not all buildings are open during the weekends, Gutman 440 has been reserved as prayer space on Saturday and Sundays, during regular Library hours.



The Memorial Church of Harvard University

The Memorial Church of Harvard University, part of a [vibrant interfaith network of Harvard](#), is an interdenominational Protestant church in the midst of Harvard Yard that serves as a place of spiritual refuge to the entire community. "MemChurch" stands opposite Widener Library as a visible reminder of the historical and spiritual heritage that has sustained Harvard for nearly four centuries. In addition to our [regularly](#)

scheduled services, we also offer a variety of programming for students, adults, and children.



Harvard Hillel

Harvard Hillel is a Jewish home on campus that seeks to:

- Welcome students to experience the variety of Jewish identity, tradition, practice, values, culture, and community.
- Inspire and enable Jewish connection, celebration, and action.
- Prepare students to join, create, shape, and lead Jewish communities; strengthen the Jewish people, and live proud Jewish lives.
- Share Jewish sources, traditions, ideas, and innovations, and their relevance in our world.
- Forge connection and engagement with the State of Israel.
- Foster friendship in a nurturing and refreshing sanctuary amid the stresses of student life.
- Engage the unique opportunities of Harvard and make Jewish thought and culture integral in the life of the University.



Please Note: In addition to student events and resources, the HGSE Weekly Newsletter is the official communication channel for important information regarding Commencement.