

# — HGSE — Weekly

Office of  
Student Affairs



Monday, October 3, 2022

## WHAT YOU NEED TO KNOW

- [Academic Coaching](#)
- [Accessibility and Accommodations](#)
- [Connecting with OSA Virtually](#)
- [Quick Links](#)
- [Yoga and Mindfulness](#)
- [Work Accountability Groups](#)
- [I Notice/I Care Form](#)
- [Food Insecurity Resources / Clothes & Furniture Resources](#)



### Beyond Recovery Seizing Opportunities to Transform Education in a Post-Covid Era

Friday, October 14, 9:30AM-4:30PM EDT

A special convening with research and practice leaders from Harvard and beyond, presented by the Askwith Education Forum at the Harvard Graduate School of Education. We'll explore several facets of COVID recovery — innovations in learning support, mental health and wellness, and supporting the teaching profession. In timely panels discussions with key sector leaders, we'll look beyond recovery to explore what a transformed educational ecosystem should — and could — look like.

Register to attend in-person. To register for in-person or to access the livestream, [click here](#).



### Gift Card Scams

There has been an increase in reports from members of the Harvard community of email and text message-based scams impersonating Harvard faculty and administrators.

The scam typically begins with a short message with a variation on “Are you available?” If you respond, the ensuing conversation typically leads to a request for you to purchase gift cards, then send photographs of them to the requestor. Any time an unsolicited email or text conversation turns into a request to purchase gift cards, it is very likely to be this scam. Sadly, victim losses are rarely recoverable.

If you receive such a message impersonating a member of the Harvard community, discontinue the conversation and forward the email (or screenshot of the text message) to [phishing@harvard.edu](mailto:phishing@harvard.edu).



### Access Recording Form

Have you encountered an issue with accessibility during your time at HGSE? Please let us know by filling out the [Access Recording Form](#).

## THIS WEEK

Monday, October 3 - Friday, October 7



### Commons Cafe Featuring Farmers Market Produce from Kimball Fruit Farm

Throughout the late summer and early fall, The Commons Café will be featuring farmers market produce from Kimball Fruit Farm located in Pepperell, Massachusetts. [Click here](#) for more information about the farm.

This week's farmers market produce will feature heirloom tomatoes including Azoychka, Carbon, Brandywine & Pineapple varieties. The featured apples are McIntosh & Honeycrisp.

Be sure not to miss the yellow peaches. They're only available for a short time!

Also, mulled apple cider is on its way!

If you have any questions about the farmers market or any other inquiries, please do not hesitate to ask me when you visit the Commons Café.

Thanks,  
Chef Matt

[View this week's menu here.](#)

**Monday, October 3, 4:30-6PM EDT**



### HGSE Hispanic Heritage Month Celebration!

*Today! Monday, October 3rd  
Gutman Conference Center  
4:30 p.m.*

The Office of Student Affairs would like to invite you to join today's celebration of National Hispanic Heritage Month. There will be music, and there will Churros and Horchata!

**Monday, October 3, 6-7:30PM EDT**



### Justice in Schools Case Discussions (on Zoom)

Justice in Schools ([justiceinschools.org](http://justiceinschools.org)) produces case studies about ethical dilemmas in education. These short, accessible cases are carefully researched and center on dilemmas that educators, school leaders, and policy makers face every day. We're currently working on a collection of international cases, and we need your help

before we can publish them!

Join us for 90-minute Zoom discussions about these cases on Monday, October 3 and/or Tuesday, October 11 from 6-7:30pm ET. Email Sara O'Brien at [seobrien@gse.harvard.edu](mailto:seobrien@gse.harvard.edu) for the case(s) and Zoom link.

### Wednesday, October 5 - Friday, October 7



#### **Bearing Witness Seeking Justice: Videography in the Hands of the People**

Comparative Media Studies/Writing in the School of Humanities, Arts, and Social Sciences at the Massachusetts Institute of Technology will host a three-day, in-person international conference, "Bearing Witness, Seeking Justice: Videography in the Hands of the People."

The conference will open with a welcome reception Wednesday, Oct. 5 from 3 to 6 p.m. After a host of dynamic, engaging, and thought-provoking speeches and panel discussions, the conference will end on Friday, Oct. 7 at 6:30 p.m.

While the conference is an in-person event, the keynote addresses will be livestreamed.

For more information and to register, [click here!](#)

### Thursday, October 6, 2PM EDT



#### **SET Workshop 2: User Testing and Surveys as Tools for Continuous Improvement**

Location: Gutman 440

Interested in honing your skills around how to gather feedback and surface the perspectives, needs, and motivations of your learners? Join the Student Experience (SET) Team as we practice using surveys and user testing sessions as tools for continuous improvement of HGSE offerings. As the Student Experience Team kicks off the year, we are inviting all HGSE students to join for skills building workshops from 2-3pm on Thursdays. Then from 3-3:30pm, we will provide time and space for those interested in staying to discuss upcoming projects. [RSVP here!](#)

For more information email [set@gse.harvard.edu](mailto:set@gse.harvard.edu).

### Thursday, October 6, 7:30PM - 9PM EDT/11:30PM-1AM GMT/5AM-6:30AM IST

**WELCOME SEASON  
FIRESIDE CHAT W/  
JUNLEI LI  
THURSDAY, OCTOBER 6TH  
7:30PM-9PM  
HOSTED BY HGSE  
PROFESSOR NANCY HILL**



Junlei Li serves as the co-chair of the Human Development and Education Program and the Saul Zaentz senior lecturer in Early Childhood Education at the Harvard Graduate School of Education.



**Virtual Fireside Chat with Professor Junlei Li, hosted by Professor Nancy Hill and the Harvard Graduate Commons Program**

*Open to ALL Harvard affiliates and family members!*

**Professor Nancy Hill (Graduate Commons Program Faculty Director)** will have an intimate conversation with **Professor Junlei Li**, former Co-Director of the Fred Rogers Institute, to discuss his perspective on what lessons caregivers and adult helpers of children can take from the work of Fred Rogers along with insight from his own research on early childhood development and his work with parents and educators. There will be an opportunity for attendees to ask Professor Junlei Li questions.

While the topics of conversation will be particularly relevant for those who are caregivers of children or who work with children, this event will have lessons for all of us in navigating difficult times with empathy and care.

[Register here!](#)

**Friday, October 7, 1PM EDT**



**HGSE Students with Disabilities Union Presents: Latinidad & Disabilities**

Location: Larsen 203

Join HGSE student organization, Students with Disabilities Union (SDU) for a conversation on latinidad and disability.

If you need accommodations, please contact [doris\\_alcantara@gse.harvard.edu](mailto:doris_alcantara@gse.harvard.edu).

*Image Description:* There are six people drawn using digital media. The people in the image are of different skin tones, eye colors, and hair textures, representing the diversity within the Latiné identity.

**Friday, October 7, 6PM-7:30PM EDT**



### **Mindfulness Association Meeting**

Location: Longfellow 229

Join us for the Mindfulness Association Meeting on Friday Oct 7th, in Longfellow 229 from 6-7:30pm! We will do a short meditation and introduce some of the tools people could use in daily practices in the first meeting. Dinner will be provided, and [please RSVP](#) for us to have a better idea of the anticipated number of participants. If you have any questions, please email [liuxy\\_rebecca@gse.harvard.edu](mailto:liuxy_rebecca@gse.harvard.edu).

**Saturday, October 8, 1PM-4PM EDT**



### **National Fossil Day: More Than Dinosaurs!**

*Free with museum admission; free parking at the 52 Oxford Street Garage*

[See the full line-up of presenters and topics.](#)

Paleontology is about more than dinosaurs! Harvard paleontologists study amazing non-dinosaur fossils including early mammals, ancient invertebrates, whales, crabs, and more! Meet members of the Stephanie E. Pierce Lab for Vertebrate Paleontology and the Ortega-Hernández Lab for Invertebrate Paleontology to see their favorite fossils, learn about their research, and ask them your questions. See what new techniques and technologies are being used to study fossils, learn what fossils can teach us about evolution, and hear about current research projects. Join us to celebrate National Fossil Day with short talks and table-top presentations for all ages.

### **Día Nacional de los Fósiles: Más que dinosaurios**

*Sábado, 8 de octubre, 1:00 a 4:00 pm*

#### **Con paleontólogos que hablan español**

*Gratis con la entrada al museo; estacionamiento gratuito en el 52 Oxford Street Garage*

La paleontología es algo más que dinosaurios. Los paleontólogos de Harvard estudian increíbles fósiles no relacionados con los dinosaurios, como los primeros mamíferos, invertebrados antiguos, ballenas, cangrejos y mucho más! Conozca a los miembros del Laboratorio Stephanie Pierce de Paleontología de Vertebrados y del Laboratorio Ortega-Hernández de Paleontología de Invertebrados para ver sus fósiles favoritos, aprender sobre sus investigaciones y hacerles preguntas. Vea qué

nuevas técnicas y tecnologías se utilizan para estudiar los fósiles, aprenda lo que los fósiles pueden enseñarnos sobre la evolución y conozca los proyectos de investigación actuales. Únase a nosotros para celebrar el Día Nacional de los Fósiles con breves charlas y presentaciones de mesa para todas las edades.

**APPLY BY Sunday, October 9**



## **HARVARD SQUARE** HOMELESS SHELTER

### **Join Harvard Square Homeless Shelter this Fall!**

Volunteer at a student-run homeless shelter and help provide shelter and resources to our Cambridge community members experiencing homelessness.

The **final application deadline is Sunday, October 9th**. Applications will be accepted on a rolling basis after this date.

For more information [click here](#) or contact [hshs.volunteer@gmail.com](mailto:hshs.volunteer@gmail.com).

**Monday, October 3 - Thursday, October 13**



### **Opportunity to share your insights in a Foundations focus group**

Would you like to share feedback and help enrich the student experience in Foundations courses next year? HGSE's TLL is hosting focus groups between October 3-13 to provide space for students to share more about their experiences across the four Foundations courses. If you are interested in reflecting with your peers and sharing your ideas, please complete this [brief attendance and consent form](#) as soon as possible. The room location or zoom link will be shared after registration.

Please reach out to [nicole\\_nash@gse.harvard.edu](mailto:nicole_nash@gse.harvard.edu) with any questions.

**In appreciation for your participation, you will receive a HGSE insulated cooler tote as a thank you gift.**

**TODAY THROUGH Monday, October 17**



### Community Sustainability Winter Clothes Drive/Clothing Drive to Support Migrants

Collection will take place between October 3 and October 17 in entryway of Gutman Library. New or gently used items being accepted include (Children and Adult Sizes):

- Coats
- Sweaters
- Warm Pants
- Boots/Warm Shoes
- Hats
- Gloves
- Scarves
- All forms of clothing for all seasons!

#### **CLOTHING ONLY PLEASE! NO HOUSEHOLD ITEMS**

Used clothing should be laundered, pockets emptied. Used shoes should be spot cleaned, free of debris.

HGSE Community members are invited to "shop" the FREE winter clothing store between October 24th and October 28th. More information about where to browse items will be shared in the coming weeks.

**TODAY THROUGH Friday, October 21**



### October Self-Care Raffle!

Happy October!

Along with the exciting changes of the season, we know that midterms are approaching, the days are getting shorter, and it may be difficult to prioritize self-care. Student Support Services hopes that these prizes can provide a space for comfort, mindfulness, and relaxation that can help you through your time at HGSE. Please fill out [this form](#) to enter to win! Winners will be announced Friday, October 21st.

## FUTURE EVENTS AND OPPORTUNITIES

**Wednesday, October 12, 12PM EDT**



FAIR. FREE. STUDENT LOAN ADVICE

### Understanding President Biden’s Student Loan Debt Relief Program

The HGSE Financial Aid Office is happy to bring to our community the following webinar: Understanding President Biden’s Student Loan Debt Relief Program on Wednesday, October 12th at 12:00 p.m. EST.

HUECU has invited Betsy Mayotte, a national loan expert and President of The Institute of Student Loan Advisors (TISLA) to walk us through the President’s broad debt relief announcement and other recent initiatives that might benefit you. [Register Now!](#)

**OPEN HOUSE: Wednesday, October 12, 4PM-6PM EDT**



### Berkman Klein Center for Internet & Security

Save the date! BKC will be hosting an open house on Wednesday, October 12, from 4:00-6:00pm in our office spaces in [Lewis International Law Center](#). The open house is open to all Harvard students and is a great time for folks to casually swing by, talk to staff about projects and our work at the Center. Please save the date and look out for an RSVP later this month.

Check out the [Guide for Harvard Students](#) to join the email list and learn about opportunities at BKC!

**Thursday, October 13, 12PM-1:30PM EDT**



### Justice in Schools Case Study Discussion on October 13

Location: Gutman 303

Justice in Schools ([justiceinschools.org](http://justiceinschools.org)) is part of the EdEthics project, led by Professor Meira Levinson. We develop normative case studies that help educators and policy makers think through ethical dilemmas in schools. Before we can publish new cases, we have to field test them, and we need your help! Join us for a 90-minute case discussion and pizza lunch on October 13th.

Email [seobrien@gse.harvard.edu](mailto:seobrien@gse.harvard.edu) for a copy of the case.

**Friday, October 14, 2PM-3:30PM EDT**



## Educators for Entertainment - Kick Off!

Location: TBA

The power of a great story to educate, shed light on topics rarely discussed, and change hearts and minds is what draws millions to entertainment - whether it's to work within the industry to tell those stories or as a consumer to experience and enjoy them. HGSE Educators for Entertainment brings together educators passionate about the magic that happens at the intersection of education and entertainment and seeks to build a bridge between the two industries and practices. More information to come!

**Friday, October 14, 2PM-3:30PM EDT**



## Join PBHA in Honoring Professor Loretta J. Ross, Human Rights and Reproductive Justice Activist

Join the Phillips Brooks House Association on Friday, October 14 from 7:30 to 9 at Lowell Lecture Hall, for our [16th Annual Robert Coles Call of Service Lecture & Award](#) honoring Professor Loretta J. Ross! [Professor Ross](#) is an award-winning, nationally-recognized expert on racism and racial justice, women's rights, and human rights. During her 50+ years as a social justice activist, she was the National Coordinator of the SisterSong Women of Color Reproductive Justice Collective from 2005-2012 and co-created the theory of Reproductive Justice in 1994.

Professor Ross was National Co-Director of the April 25, 2004, March for Women's Lives in Washington D.C., the largest protest march in U.S. history at that time. She founded the National Center for Human Rights Education (NCHRE) in Atlanta, Georgia, launched the Women of Color Program for the National Organization for Women (NOW), and was the national program director of the National Black Women's Health Project. One of the first African American women to direct a rape crisis center, Professor Ross was the third Executive Director of the D.C. Rape Crisis Center. Ross is now a Professor at Smith College in the Program for the Study of Women and Gender.

[RSVP Here.](#)

**APPLY BY Friday, October 14**

APPLY FOR A SUSTAINABILITY

# STUDENT GRANT

Apply by  
OCT 14

Our Sustainability Student Grant Program funds creative projects that contribute to Harvard's commitment to climate and health, and which help create a more sustainable campus community. This year, we are especially interested in projects focused on environmental justice, social equity, diversity, inclusion, and belonging.

Email [rachel\\_martinez@harvard.edu](mailto:rachel_martinez@harvard.edu) to set up a consulting session.  
[green.harvard.edu/grants](https://green.harvard.edu/grants)



LIVING LAB HARVARD Office for Sustainability

## Apply for a Student Sustainability Grant

The Office for Sustainability founded the Student Grant program in 2010 to provide students with seed funding to support new ideas and innovative projects that address global sustainability challenges with on-campus applications. Our Student Grant program funds creative projects that contribute to Harvard's commitment to climate and health and help create a more sustainable community. The Program funds projects that are specifically aligned with the goals, standards, and commitments in [Harvard's Sustainability Plan](#). Special consideration is given to projects that address climate change and enhance human well-being, as well as those focused on environmental justice, social equity, diversity, inclusion, and belonging and their intersections with sustainability challenges on campus.

Deadline to apply: Friday, October 14, 2022.

[Apply for a Student Grant here.](#)

If you are interested in applying but have questions, or would like to discuss a potential project idea, please email [rachel\\_martinez@harvard.edu](mailto:rachel_martinez@harvard.edu) to set up a quick consulting session.

Monday, October 17, 12PM-1PM EDT/5PM-6PM GMT/9:30PM-10:30PM IST



Emotional Intelligence for Career Readiness

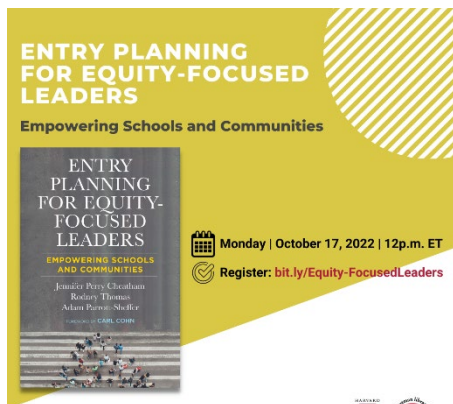


## Emotional Intelligence for Career Success with Dr. Jenny Woo, EdM '18

[RSVP and more information here.](#)

Emotional Intelligence (EQ) is the ability to understand your own emotions and the emotions of others and to use that understanding to effectively solve problems and make wiser decisions. In practice, EQ is essential for standing out in job interviews, collaborating in teams, and influencing others. In this session, participants will learn about the four dimensions of emotional intelligence and how to apply them to improve professional branding, communications, and leadership skills. Dr. Jenny Woo is a TEDx speaker and founder/CEO of [Mind Brain Emotion](#), incubated out of The Harvard Innovation Labs.

Monday, October 17, 12PM-1PM EDT/5PM-6PM GMT/9:30PM-10:30PM IST



## Gutman Library Virtual Book Talk - Entry Planning for Equity-Focused Leaders: Empowering Schools and Communities

A vital resource for educational leaders, *Entry Planning for Equity-Focused Leaders* introduces an equity-minded process for intentional entry planning that sets the stage for sustainable change within organizations. In this practitioner-focused and action-oriented work, Jennifer Perry Cheatham, Ed.D.'10, Rodney Thomas, and Adam Parrott-Sheffer, Ed.M.'09, Ed.L.D.'20, consolidate their extensive experience centering equity in leadership. They affirm that the entry of a new leader, or the pivot of an established one, affords an unparalleled opportunity to garner the insight, trust, and commitment that will establish a basis for positive, equitable transformation within a system.

[Register here.](https://bit.ly/Equity-FocusedLeaders)

*Please note that all of Gutman Library virtual events are open to the public and are live-captioned!*



**Wednesday, October 19, 12PM-1PM EDT**



## First Take: Beginnings

GCC Area 3

Join the HGSE community for an afternoon of 'moth style' story telling. We welcome those who wish to tell a story as well as those who come to listen.

Interested in being a teller?

Prepare a 5 minute story on the theme of beginnings and put your name in the hat for a chance to tell.

Your story must...

- be from personal experience
- be true
- be in story form (no music or poetry)
- told without notes
- be free of vulgarity and offensive material

Storytelling will begin at 12:15, arrive early to enter your name.

*If you require accessibility accommodations, please contact Andrea Le at [andrea\\_le@gse.harvard.edu](mailto:andrea_le@gse.harvard.edu) at least 48 hours in advance.*

**Thursday, October 20, 4PM-5PM EDT (Virtual)**

REIMAGINING  
CAMPUS  
COMMUNITY  
SAFETY



**COMMUNITY  
CONVERSATION**

We want to hear from YOU!  
This initiative seeks to understand your needs, concerns, and experiences with regard to safety and well-being at Harvard. This is a unique opportunity to engage in a process of defining and reimagining campus safety.

**SIGN UP TODAY!**



 HARVARD UNIVERSITY [HTTPS://CAMPUSCOMMUNITYSAFETY.HARVARD.EDU/](https://campuscommunitysafety.harvard.edu/)

### Reimagining Campus Community Safety

As part of the Reimagining Campus Community Safety initiative, you are invited to join a facilitated dialogue around what it means to feel safe in Harvard spaces. This initiative seeks to understand your needs, concerns, and experiences with regard to safety and well-being at Harvard. This is a unique opportunity to engage in a process of defining and reimagining campus safety.

To see the schedule of community conversations and to provide feedback through a survey, [click here](#).

The next graduate student Community Conversations is scheduled for **October 20th at 4PM EDT** over Zoom.

**Monday, October 24, 12PM-1PM EDT (Virtual)**

**HOW TEACHING HAPPENS:  
SEMINAL WORKS IN TEACHING AND TEACHER EFFECTIVENESS AND WHAT THEY MEAN IN PRACTICE**

MONDAY | OCTOBER 24, 2022 | 12-1P.M. ET



Learn more and register at:  
[bit.ly/How-Teaching-Happens](https://bit.ly/How-Teaching-Happens)

### Gutman Library Virtual Book Talk: How Teaching Happens: Seminal Works in Teaching and Teacher Effectiveness and What They Mean in Practice

Building on their bestselling book *How Learning Happens*, Paul Kirschner and Carl Hendrick are joined by Jim Heal, Ed.L.D.'19, to explore how teaching happens.

Contact [myanne.krivoshey@gse.harvard.edu](mailto:myanne.krivoshey@gse.harvard.edu) if you have questions/requests regarding accessibility. Please note that all of Gutman Library virtual events are open to the public and are live-captioned.

**Monday, October 24 - Friday, December 16**



### **A811A8: Music as the Universal Language for Education and Learning in the Classroom and Beyond**

*Taught by: Dr. Dion Cunningham, Assistant Professor, University of the Bahamas, Chen Yidan Visiting Global Fellow*

Music is a universal language for learning across cultures. From toddlers learning their abc's using a familiar musical tune to Mozart's "Ah! Vous dirai-je, Maman" to stroke victims using familiar songs to relearn speech, this course explores the role of music performance and music listening in the critical process of how people learn and how the human brain develops. In the first part of the course, we will explore how pathways in music performance, listening, and neuromechanics contribute to brain development and educational attainment. Does exposure to music augment learning capacity? Does the incorporation of music in the teaching and learning of other academic disciplines impact the reception and retention of knowledge and skills?

[Click here](#) to find out more and register!

**Tuesday, October 25, 9AM-10AM EDT**



### **Public School Partnerships in Rural South Africa**

Harvard alumnus, Craig Paxton, will be presenting on a collaborative and innovative approach to strengthening under-resourced rural schools.

As director of [Axiom Education](#) (NGO), the operating partner of South Africa's first rural Public School Partnership, he will offer unique insights about working alongside government departments, traditional leaders, international funders and local school communities, all the while striving to improve learning outcomes at 9 'no-fee' schools.

Please indicate your interest in the event by [pre-registering via this Qualtrics form](#).

For anyone requiring accessibility accommodations, please contact Crystal Quintanilla at [crystal\\_quintanilla@gse.harvard.edu](mailto:crystal_quintanilla@gse.harvard.edu) at least 48 hours in advance.

*This event is sponsored by the Office of Student Affairs.*

**Wednesday, October 26, 3PM-5PM EDT**



### Calling All Families: Save the Date for the HGSE Halloween Celebration

Please save the date for our annual HGSE Halloween Celebration on Appian Way to be held on Wednesday, October 26th from 3:00pm – 5:00pm in the Gutman Gallery (main floor of Gutman Library). The entire HGSE Community is invited, and family members are welcome – especially the kiddos!

#### Schedule of Activities:

3:00 pm: Gutman Gallery “trick or treat” and cider/cookies

4:00 pm: Story Time with Special Guest Reader

4:15 pm: Musical Halloween performance by [Matt Heaton](#)

Sponsored by the HGSE Administrative Council for Engagement (ACE)

*For anyone requiring accessibility accommodations, please contact Andrea Le ([andrea\\_le@gse.harvard.edu](mailto:andrea_le@gse.harvard.edu)) at least 48 hours in advance.*

**Wednesday, October 26, 3PM-6PM EDT**



### The Future Is Now: Harvard Takes On the Climate Challenge

The Salata Institute for Climate and Sustainability's inaugural event on October 26 will offer an occasion to celebrate Harvard University's new climate initiative and discuss the inspiring work that lies ahead for all of us—faculty, students, and staff—as we rise to the global climate change challenge.

Knafel Center, Harvard Radcliffe Institute

10 Garden Street, Cambridge, MA, 02138, United States

3:00–4:30 p.m.: Panel Discussion

4:30–6:00 p.m.: Reception

[RSVP required.](#)

**APPLY BY Tuesday, November 1, 2022**



EDMOND & LILY SAFRA  
Center for Ethics

### Graduate Fellowships in Ethics

The Edmond & Lily Safra Center for Ethics Graduate Fellowship Program invites applications from graduate students who are writing dissertations or are engaged in major research on topics in practical ethics, especially ethical issues in architecture, business, education, government, law, medicine, public health, public policy, and religion. [Click here](#) for more details.

If you have any questions, please contact [ejsafrafellowships@fas.harvard.edu](mailto:ejsafrafellowships@fas.harvard.edu) or visit <https://apply.ethics.harvard.edu/> for more information.

## MULTIPLE DATES



### Registration Open: Harvard Community Bus Trips to the Forest

Harvard students, faculty, fellows, and staff may now sign up for one of several free monthly bus trips to visit Harvard Forest, located 70 miles west of Harvard Square.

Trips fill up quickly! To learn more and register, [click here](#).

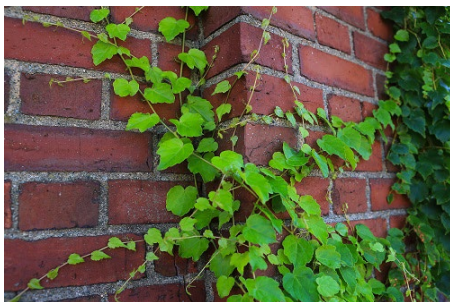
## Ongoing Opportunities & Resources



### Join the GSAS Student Center Jazz Bands!

The Graduate School of Arts and Sciences Student Center Jazz Bands are **looking for bassists and an experienced drummer** and we're open to grad students from the Ed School! If interested, please email [gsasjazzfellow@fas.harvard.edu](mailto:gsasjazzfellow@fas.harvard.edu).

The GSAS Student Center Jazz Bands are students who come together to rehearse weekly and perform at one or two concerts each semester. We have multiple small ensembles, some for experienced jazz improvisers and some for players with prior musical experience but limited jazz experience. Rehearsals are laid-back, fun and collaborative – a time to try out creative ideas, with participants helping to lead rehearsals, sharing ideas for musical interpretation, composing harmonies and picking repertoire.



### HGSE COVID Policy

#### [Coronavirus: HGSE Looks Forward.](#)

The health and safety of our community members, their families, and the public remain a top priority. Please check out our current policies and procedures, especially what to do if you test positive for COVID-19.



## Reminder to Report Positive COVID Test Results through Crimson Clear

Students should report positive COVID test results immediately through [Crimson Clear](#). (If you use the Harvard Color testing system, this will be done automatically.) Reporting this information is essential for our ability to monitor health conditions in our community, and doing so will prompt Harvard University Health Services (HUHS) to contact you via your Harvard email to provide guidance on treatment options and next steps, including instructions about isolation and notifying your close contacts. You are also encouraged to complete the self-assessment form on Crimson Clear if you are experiencing symptoms or would like guidance after a potential exposure to COVID.

In the event that you must isolate, you must also notify your instructors of any necessary absences from class, though you do not need to share your specific COVID diagnosis. The Office of Student Affairs also stands ready to offer support in contacting instructors and getting access to care if you contact them.

## Support for those Impacted by the Floods in Pakistan

[Flooding in Pakistan](#) has affected 33 million people and has killed at least 1,325 people. The devastation that the flooding has caused will take many years to recover from and will cost millions of dollars. A group of dedicated HGSE students is asking for the community's support in raising funds to help those affected. Individuals interested in supporting the cause can make donations directly to the organizations listed below that are actively doing relief work in the regions that have been most impacted.

- [Edhi Foundation](#)
- [The Citizen's Foundation \(TCF\)](#)

# HGSCF

Harvard Graduate School  
Christian Fellowship

## HGSE Christian Fellowship Monday Meet-up

*Mondays at 6PM ET  
Gutman 440*

The HGSE Christian Fellowship is a community of graduate students who are interested in learning more about Jesus and exploring how faith in Him influences our studies and work. We get together to share openly about our lives, pray for each other, and read the Bible.

We meet regularly on Mondays at 6pm, so we can build community and encourage each other in the faith. Seekers are warmly welcomed! Contact Chermaine Goh at [chermainegoh@gse.harvard.edu](mailto:chermainegoh@gse.harvard.edu) for any queries.



### Student Conference Fund Application

2022-2023 HGSE Student Conference Fund HGSE is committed to supporting the academic and professional development of students both within and outside of the classroom. The Student Conference Fund seeks to help defray the cost of travel and registration fees for students who are presenting or attending conferences. Students who are presenting are eligible for up to \$750 in funding; students who are attending are eligible for up to \$500 in funding. All conferences must align with the mission of HGSE.

[Click here to apply.](#)



### Graduate Intramural Sports League

Come participate in the inaugural Graduate Intramural Sports League!

Sports include flag football, volleyball, ultimate frisbee, futsal, soccer, basketball, and more!

This opportunity is open to all Harvard graduate and professional students. Intramural sports are casual sport competitions that invites all levels of experience to participate in with low levels of commitment.

Come participate in the inaugural Graduate Intramural Sports League!  
To sign-up and learn more click on the link or scan the QR code below.

Flag Football  
Ultimate Frisbee  
Soccer  
AND MORE!!!

Volleyball  
Futsal  
Basketball

SCAN HERE!!!



To sign-up and learn more [click here!](#)



### Interested in creating or reactivating a student organization at HGSE?

The student organization recognition process is now open!

A student organization is defined as a group of HGSE students who unite to promote or celebrate a common interest. Each organization leaves its special mark on the cultural, social, and intellectual life of HGSE. The content of any student organized event should address an academic, cultural, or social need.

To learn more about the benefits of official recognition, to submit your request, and to access the student organization training [click here.](#)

### Launch of Student Interest Groups

Recognizing that there may be groups of students who want to convene around a shared interest, but who do

not foresee needing funding or planning events, the Office of Student Affairs will be supporting a limited number of Student Interest Groups during the 2022-2023 Academic Year. Potential groups include a running club, a knitting group, an e-sports club, etc. However, OSA staff will only know of student interests through student completion of the [Student Interests Survey](#). Please complete that survey to have your interests represented.

### Calling all HGSE students – what are you interested in?

We hope you will take the time to complete [this survey](#)! The survey seeks to gather information about some of identities and interests that are important to you. This information will be helpful for us as we lead the creation of student interest groups and put together plans for programming for the 2022-2023 academic year.

Please note that none of the questions are required. The information that you provide will only be used to help inform activities being sponsored by the Office of Student Affairs.



### Harvard University Counseling and Mental Health Services (CAMHS)

CAMHS is a no-cost support service that works collaboratively across the University to support registered students who are experiencing some measure of distress in their lives. CAMHS provides individual mental health counseling sessions, groups, and workshops that provide a safe space for students to discuss concerns and learn coping skills. Additionally, CAMHS Cares is a 24/7 hotline for students who have mental health concerns or questions of any kind, whether they are in immediate distress or not, on campus or elsewhere. The number to call to be connected to a licensed CAMHS Cares counselor is 617-495-2042.

Review this [powerpoint presentation](#) to learn more about CAMHS.



### Mindfulness for Students at the Center for Wellness and Health Promotion

As we start the new semester here at [CWHP](#), we are excited to offer a variety of mindfulness programs to support your wellbeing. Subscribe to the monthly

newsletter [here](#) for more information on wellness offerings, classes, and workshops!



### Harvard Language Exchange

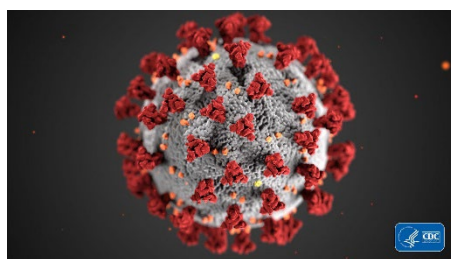
Are you tired of having one-way conversations with the language app on your phone? Using the Language Exchange, you can search for prospective language partners who speak your target language, and in turn whose target language you speak. Register for as many languages as you'd like. All you need to sign up is a Harvard ID or XID, which you can create from the link on the homepage. After registering, you can match with prospective partners from the searchable database—an email will automatically be sent to the user(s) you choose, and users can accept or decline matches.

[Register here.](#)



### Work Accountability Groups

Student Support Services hosts weekly Work Accountability Groups (WAGs) on Zoom. These accountability groups will hold space for students to gather and work in a supportive environment. Each WAG is 2 hours long and they are hosted multiple times throughout the week. For more information and to join, and please [visit here](#).



### CORONAVIRUS: ADVICE FOR TRAVELERS

Certain Harvard-related travel is permitted for fully-vaccinated affiliates. [Review our advice](#) for developing a safe travel plan if you decide to travel amid the COVID-19 pandemic.

**HGSE OFFICE OF DIVERSITY, EQUITY, AND INCLUSION**



### Latinx vs. Latine

**Thursday, October 6 from 6:00 p.m. – 7:00 p.m.**

*Virtual*

[Register here.](#)

The US-centric term Latinx has gained popularity in US academia and politics. Used to challenge the gender binary, Latinx is the gender-neutral alternative to Latina or Latino. Although popular among several education, political, and LGBTQIA+ spaces in the United States, like the term Hispanic, Latinx also faces criticism among the Latin community. Ending with the letter X makes Latinx a non-Spanish word for many in Latin America to describe themselves. While Latine is also a gender-neutral form of the word Latino, created by gender non-binary and feminist communities in Spanish-speaking countries. The objective of the term is also to remove gender from Spanish, by replacing it with the gender-neutral Spanish letter E.

As this debate continues to challenge cisheteronormativity in the Spanish language, please join us as we discuss the topic with James Lee, creator of [CallMeLatine.com](http://CallMeLatine.com) to explore which terminology is being adopted today and which term is better suited to represent our students who are men, women, gender non-conforming, non-binary, trans, queer, agender, and gender-fluid folks of Latin descent.



**Follow the new ODEI Twitter & Instagram to stay updated on upcoming events!**

**Twitter:** [https://twitter.com/HGSE\\_ODEI](https://twitter.com/HGSE_ODEI)

**Instagram:** [https://www.instagram.com/hgse\\_odei/](https://www.instagram.com/hgse_odei/)

## RELIGIOUS RESOURCES



## Harvard Chaplains

### Harvard Chaplains

The Harvard Chaplains, a professional community of more than thirty chaplains, represent many of the world's religious, spiritual, and ethical traditions, and share a collective commitment to serving the spiritual needs of the students, faculty, and staff of Harvard University. Learn more on the [Chaplains website](#).



### Prayer Space on the HGSE Campus

Longfellow 214 is a dedicated prayer space here on the HGSE campus. Recognizing that not all buildings are open during the weekends, Gutman 440 has been reserved as prayer space on Saturday and Sundays, during regular Library hours.



### The Memorial Church of Harvard University

The Memorial Church of Harvard University, part of a [vibrant interfaith network of Harvard](#), is an interdenominational Protestant church in the midst of Harvard Yard that serves as a place of spiritual refuge to the entire community. "MemChurch" stands opposite Widener Library as a visible reminder of the historical and spiritual heritage that has sustained Harvard for nearly four centuries. In addition to our [regularly scheduled services](#), we also offer a variety of [programming](#) for students, adults, and children.

HARVARD



HILLEL

### Harvard Hillel

[Harvard Hillel](#) is a Jewish home on campus that seeks to:

- Welcome students to experience the variety of Jewish identity, tradition, practice, values, culture, and community.
- Inspire and enable Jewish connection, celebration, and action.
- Prepare students to join, create, shape, and lead Jewish communities; strengthen the Jewish people, and live proud Jewish lives.
- Share Jewish sources, traditions, ideas, and innovations, and their relevance in our world.
- Forge connection and engagement with the State of Israel.
- Foster friendship in a nurturing and refreshing sanctuary amid the stresses of student life.
- Engage the unique opportunities of Harvard and make Jewish thought and culture integral in the life of the University.



**Please Note:** In addition to student events and resources, the HGSE Weekly Newsletter is the official communication channel for important information regarding Commencement.



HGSE Weekly is a publication of the Office of Student Affairs at the Harvard Graduate School of Education.

**Our mailing address is:**

Harvard Graduate School of Education  
13 Appian Way  
Cambridge, MA 02138 US

HARVARD



GRADUATE SCHOOL  
OF EDUCATION

[unsubscribe from all emails](#) [update subscription preferences](#) [update profile](#)