

— HGSE — Weekly

Office of
Student Affairs



Tuesday, October 11, 2022

WHAT YOU NEED TO KNOW

- [Academic Coaching](#)
- [Accessibility and Accommodations](#)
- [Connecting with OSA Virtually](#)
- [Quick Links](#)
- [Yoga and Mindfulness](#)
- [Work Accountability Groups](#)
- [I Notice/I Care Form](#)
- [Food Insecurity Resources / Clothes & Furniture Resources](#)



National Coming Out Day

The Office of Student Affairs would like to wish you a happy [National Coming Out Day!](#) (NCOD)

Today, Tuesday, October 11th, stop by the 1st floor of Gutman Library to grab a sticker, and/or take a selfie by the step and repeat banner.

We would also like to highlight Trans Community Day, by the Office of BGLTQ Student Life, taking place tomorrow, Wednesday, October 12 from 5:30 to 8:30 p.m. in Cabot House, Theater.

Finally, a reminder that [Counseling and Mental Health Service](#) (CAMHS) offers workshops and groups such as [Women's Queer Group](#), [Transcend Group](#), [Men's Queer Group](#). If you have questions about eligibility, please call 617.495.5795.

To learn more about NCOD, visit [The Human Rights Campaign](#).



Beyond Recovery Seizing Opportunities to Transform Education in a Post-Covid Era

Friday, October 14, 9:30AM-4:30PM EDT

A special convening with research and practice leaders from Harvard and beyond, presented by the Askwith Education Forum at the Harvard Graduate School of Education. We'll explore several facets of COVID recovery — innovations in learning support, mental health and wellness, and supporting the teaching profession. In timely panels discussions with key sector leaders, we'll look beyond recovery to explore what a transformed educational ecosystem should — and could — look like.

Register to attend in-person. To register for in-person or to access the livestream, [click here](#).

Needing help is something we all have in common.

We all face challenges when it comes to our wellbeing and mental health. Learn more about available support and resources.

WE'RE ALL HUMAN

We're ALL Human: Supporting Wellbeing and Mental Health

Intellectual growth and academic achievement should not come at the expense of wellbeing. Together, we can create a culture at Harvard that embraces the importance of mental health.

Learn more about prioritizing your wellbeing [here](#).

THIS WEEK

Tuesday, October 11 - Friday, October 14



Important Update from Commons Café

Mulled apple cider is back and will be available through November. Grab a satisfying hot cider from your friendly barista!

If you have any questions, please do not hesitate to ask me when you visit the Commons Café.

Thank you,
Chef Matt

View this week's menu [here](#).

TODAY THROUGH Monday, October 17



Community Sustainability Winter Clothes Drive for HGSE Community & Clothing Drive to Support Migrants

Collection will take place between October 3 and October 17 in entryway of Gutman Library. New or gently used items being accepted include (Children and Adult Sizes):

- Coats
- Sweaters
- Warm Pants
- Boots/Warm Shoes
- Hats
- Gloves
- Scarves
- All forms of clothing for all seasons!

CLOTHING ONLY PLEASE! NO HOUSEHOLD ITEMS

Used clothing should be laundered, pockets emptied. Used shoes should be spot cleaned, free of debris.

HGSE Community members are invited to "shop" the FREE winter clothing store between October 24th and October 28th. More information about where to browse items will be shared in the coming weeks.

Wednesday, October 12, 12PM EDT



Understanding President Biden's Student Loan Debt Relief Program

The HGSE Financial Aid Office is happy to bring to our community the following webinar: Understanding President Biden's Student Loan Debt Relief Program on Wednesday, October 12th at 12:00 p.m. EST.

HUECU has invited Betsy Mayotte, a national loan expert and President of The Institute of Student Loan Advisors (TISLA) to walk us through the President's broad debt relief announcement and other recent initiatives that might benefit you. [Register Now!](#)

OPEN HOUSE: Wednesday, October 12, 4PM-6PM EDT



Berkman Klein Center for Internet & Security Open House

The Berkman Klein Center at Harvard University is housing our fall [Open House](#) on **Wednesday October 12, from 4-6 p.m. in our beautiful new office spaces in Lewis Hall on the [HLS Campus](#).**

We welcome all in the Harvard Community to join us to meet our faculty, fellows, and staff; explore our research projects; and learn about the ways you can get involved

in our dynamic, exciting environment. To join us, please [RSVP here](#); you can join us for any period of the Open House and do not have to attend the full block of time. If you can't join the Open House, you can [sign up for our listservs](#) to be informed of future events and opportunities.

Thursday, October 13, 12PM-1:30PM EDT



Justice in Schools Case Study Discussion on October 13

Location: Gutman 303

Justice in Schools creates case studies exploring ethical dilemmas in education, and we need your help! Join us October 13 for a pizza lunch and case discussion to help us test out a new case. Email seobrien@gse.harvard.edu to RSVP and get a copy of the case.

Thursday, October 13, 2PM-3:30PM EDT



SET Workshop 3: Design Thinking Approaches for Continuous Improvement of HGSE Experience

Location: Gutman 440

Interested in honing your skills around generating and aligning recommendations to the needs and motivations of your learners? Join the Student Experience (SET) Team as we practice using design thinking tools for continuous improvement of HGSE offerings. As the Student Experience Team kicks off the year, we are inviting all HGSE students to join for skills building workshops from 2-3pm on Thursdays. Then from 3-3:30pm, we will provide time and space for those interested in staying to discuss upcoming projects. To RSVP, [click here](#).

Friday, October 14, 2PM-3:30PM EDT



Educators for Entertainment - Kick Off!

Location: Gutman 350 /

<https://dockwa.zoom.us/my/katharinekirk>

HGSE Educators for Entertainment seeks to grow the educational impact of storytelling and media. Join us for our first meeting, where we will have coffee and Blackbird Doughnuts to fuel us as we get to know one another, discuss what we're looking to get out of Educators for Entertainment both personally and professionally, and lay the groundwork for the next

several months together.
Looking forward to seeing you there!

Friday, October 14, 2PM-3:30PM EDT



Join PBHA in Honoring Professor Loretta J. Ross, Human Rights and Reproductive Justice Activist

Join the Phillips Brooks House Association on Friday, October 14 from 7:30 to 9 at Lowell Lecture Hall, for our [16th Annual Robert Coles Call of Service Lecture & Award](#) honoring Professor Loretta J. Ross! [Professor Ross](#) is an award-winning, nationally-recognized expert on racism and racial justice, women's rights, and human rights. During her 50+ years as a social justice activist, she was the National Coordinator of the SisterSong Women of Color Reproductive Justice Collective from 2005-2012 and co-created the theory of Reproductive Justice in 1994.

Professor Ross was National Co-Director of the April 25, 2004, March for Women's Lives in Washington D.C., the largest protest march in U.S. history at that time. She founded the National Center for Human Rights Education (NCHRE) in Atlanta, Georgia, launched the Women of Color Program for the National Organization for Women (NOW), and was the national program director of the National Black Women's Health Project. One of the first African American women to direct a rape crisis center, Professor Ross was the third Executive Director of the D.C. Rape Crisis Center. Ross is now a Professor at Smith College in the Program for the Study of Women and Gender.

[RSVP Here.](#)

Friday, October 14, 5PM-6:30PM EDT



Mindfulness Association Basic Tai Chi Workshop

Join us for the Mindfulness Association Basic Tai Chi Workshop on Friday Oct 14th, in Longfellow 228 from 5-6:30pm! After a light meal, we will practice basic Tai Chi for health to cope with the cold weather. Please [RSVP](#) for us to have a better idea of the anticipated number of participants. If you have any questions, please email liuxy_rebecca@gse.harvard.edu.

APPLY BY Friday, October 14

APPLY FOR A SUSTAINABILITY

STUDENT GRANT

Apply by
OCT 14

Our Sustainability Student Grant Program funds creative projects that contribute to Harvard's commitment to climate and health, and which help create a more sustainable campus community. This year, we are especially interested in projects focused on environmental justice, social equity, diversity, inclusion, and belonging.

Email rachel_martinez@harvard.edu to set up a consulting session.
green.harvard.edu/grants



LIVING LAB HARVARD Office for Sustainability

Apply for a Student Sustainability Grant

The Office for Sustainability founded the Student Grant program in 2010 to provide students with seed funding to support new ideas and innovative projects that address global sustainability challenges with on-campus applications. Our Student Grant program funds creative projects that contribute to Harvard's commitment to climate and health and help create a more sustainable community. The Program funds projects that are specifically aligned with the goals, standards, and commitments in [Harvard's Sustainability Plan](#). Special consideration is given to projects that address climate change and enhance human well-being, as well as those focused on environmental justice, social equity, diversity, inclusion, and belonging and their intersections with sustainability challenges on campus.

Deadline to apply: Friday, October 14, 2022.

[Apply for a Student Grant here.](#)

If you are interested in applying but have questions, or would like to discuss a potential project idea, please email rachel_martinez@harvard.edu to set up a quick consulting session.

Saturday, October 15, 11AM-3PM EDT



International Archaeology Day: Meet an Archaeologist

[Peabody Museum of Archaeology & Ethnology](#)
11 Divinity Avenue, Cambridge

Drop in to learn about archaeology with graduate students. Join archaeologist Jack Bishop and examine ancient stone tools for a glimpse into the early domestication of animals and the rise of agriculture in the Middle East (11:00 am–1:00 pm). See how the ancient Inka of Peru (c. 1400–1532 CE) wrote with string. Join archaeologist Mack FitzPatrick in deciphering a *quipu*—a knotted string record-keeping system—through close examination of a working replica (1:00–3:00 pm). Handle examples and ask questions. Look for the archaeologists in the third floor gallery.

Free with regular museum admission.

Presented by the Peabody Museum of Archaeology & Ethnology and Harvard Museums of Science & Culture

ENTER BY Thursday, October 20



October Self-Care Raffle!

Happy October!

Along with the exciting changes of the season, we know that midterms are approaching, the days are getting shorter, and it may be difficult to prioritize self-care. Student Support Services hopes that these prizes can provide a space for comfort, mindfulness, and relaxation that can help you through your time at HGSE. Please fill out [this form](#) to enter to win! Winners will be announced Friday, October 21st.

FUTURE EVENTS AND OPPORTUNITIES

Monday, October 17, 12PM EDT



HGSE Knitting, Crochet & Craft Group

Monday October 17th

12:00PM

Longfellow 229

Calling all knitters, crocheters, and crafters! Are you interested in meeting others crafters at HGSE? Join us on Monday, October 17th at 12:00PM in Longfellow 229 to craft in community. You are welcome to bring any projects you are working on. We will also have some knitting/crochet material available for you to start something new.

If you require accessibility accommodations, please contact Andrea Le at andrea_le@gse.harvard.edu at least 48 hours in advance.

Monday, October 17, 12PM-1PM EDT/5PM-6PM GMT/9:30PM-10:30PM IST



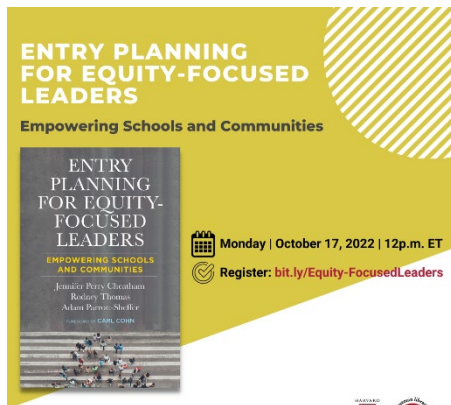
Emotional Intelligence for Career Success with Dr. Jenny Woo, EdM '18

[RSVP and more information here.](#)

Emotional Intelligence (EQ) is the ability to understand your own emotions and the emotions of others and to use that understanding to effectively solve problems and make wiser decisions. In practice, EQ is essential for standing out in job interviews, collaborating in teams, and influencing others. In this session, participants will learn

about the four dimensions of emotional intelligence and how to apply them to improve professional branding, communications, and leadership skills. Dr. Jenny Woo is a TEDx speaker and founder/CEO of [Mind Brain Emotion](#), incubated out of The Harvard Innovation Labs.

Monday, October 17, 12PM-1PM EDT/5PM-6PM GMT/9:30PM-10:30PM IST



Gutman Library Virtual Book Talk - Entry Planning for Equity-Focused Leaders: Empowering Schools and Communities

A vital resource for educational leaders, Entry Planning for Equity-Focused Leaders introduces an equity-minded process for intentional entry planning that sets the stage for sustainable change within organizations. In this practitioner-focused and action-oriented work, Jennifer Perry Cheatham, Ed.D.'10, Rodney Thomas, and Adam Parrott-Sheffer, Ed.M.'09, Ed.L.D.'20, consolidate their extensive experience centering equity in leadership. They affirm that the entry of a new leader, or the pivot of an established one, affords an unparalleled opportunity to garner the insight, trust, and commitment that will establish a basis for positive, equitable transformation within a system.

[Register here.](#)

Please note that all of Gutman Library virtual events are open to the public and are live-captioned!

Wednesday, October 19, 12PM-1PM EDT



First Take: Beginnings

GCC Area 3

Join the HGSE community for an afternoon of 'moth style' story telling. We welcome those who wish to tell a story as well as those who come to listen.

Interested in being a teller?

Prepare a 5 minute story on the theme of beginnings and put your name in the hat for a chance to tell.

Your story must...

- be from personal experience
- be true
- be in story form (no music or poetry)
- told without notes
- be free of vulgarity and offensive material

Storytelling will begin at 12:15, arrive early to enter your name.

If you require accessibility accommodations, please contact Andrea Le at andrea_le@gse.harvard.edu at least 48 hours in advance.

Thursday, October 20, 4PM-5PM EDT (Virtual)



REIMAGINING
CAMPUS
COMMUNITY
SAFETY

**COMMUNITY
CONVERSATION**

We want to hear from YOU!
This initiative seeks to understand your needs, concerns, and experiences with regard to safety and well-being at Harvard. This is a unique opportunity to engage in a process of defining and reimagining campus safety.

SIGN UP TODAY!



 HARVARD UNIVERSITY [HTTPS://CAMPUSCOMMUNITYSAFETY.HARVARD.EDU/](https://campuscommunitysafety.harvard.edu/)

Reimagining Campus Community Safety

As part of the Reimagining Campus Community Safety initiative, you are invited to join a facilitated dialogue around what it means to feel safe in Harvard spaces. This initiative seeks to understand your needs, concerns, and experiences with regard to safety and well-being at Harvard. This is a unique opportunity to engage in a process of defining and reimagining campus safety.

To see the schedule of community conversations and to provide feedback through a survey, [click here](#).

The next graduate student Community Conversations is scheduled for **October 20th at 4PM EDT** over Zoom.

Friday, October 21, 6PM-10PM EDT



HGSE

**Diwali
Celebration**



Friday, October 21st
6:00 - 10:00PM
Gutman Conference Center

HGSE Diwali Celebration

Friday, October 21st

6:00 – 10:00PM

Gutman Conference Center

Please **RSVP**

Join us for food, music, performances, and activities in celebration of Diwali! All HGSE students and their guests are invited to attend.

Help create decorations for Diwali!

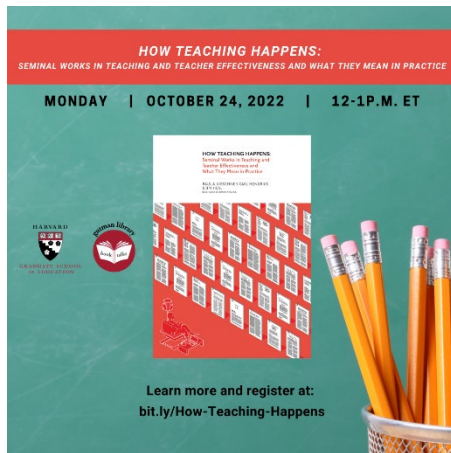
We will be gathering at the following dates and times to create lanterns for the Diwali celebration. No experience needed! Please drop in as you are able.

Friday, October 14th – 4:00 to 6:00PM – Garden Room, First Floor of Gutman (the room with the tables and fireplace next to the café)

Wednesday, October 19th – 10:00AM to 12:00PM – Gutman Conference Center, Area 4

If you require accessibility accommodations, please contact Andrea Le at andrea_le@gse.harvard.edu at least 48 hours in advance.

Monday, October 24, 12PM-1PM EDT (Virtual)



Gutman Library Virtual Book Talk: How Teaching Happens: Seminal Works in Teaching and Teacher Effectiveness and What They Mean in Practice

Building on their bestselling book *How Learning Happens*, Paul Kirschner and Carl Hendrick are joined by Jim Heal, Ed.L.D.'19, to explore how teaching happens.

Contact myanne.krivoshey@gse.harvard.edu if you have questions/requests regarding accessibility. Please note that all of Gutman Library virtual events are open to the public and are live-captioned.

Monday, October 24, 7PM EDT



HGSE Open Mic Night is Happening!

Holden Chapel (Harvard Yard)

HGSE student organization, Opens Mics, invites you to join in on an evening of music, comedy, dance, poetry, and more!

Whether you want to share your creative talents or you just want to enjoy live performances as an audience member, you are welcome!

This event is open to all Harvard students, staff, and faculty.

To request accessibility accommodations, please contact Crystal Quintanilla at crystal_quintanilla@gse.harvard.edu at least 48 hours in advance.

Tuesday, October 25, 9AM-10AM EDT



Public School Partnerships in Rural South Africa

Harvard alumnus, Craig Paxton, will be presenting on a collaborative and innovative approach to strengthening under-resourced rural schools.

As director of [Axiom Education](#) (NGO), the operating partner of South Africa's first rural Public School Partnership, he will offer unique insights about working alongside government departments, traditional leaders, international funders and local school communities, all the while striving to improve learning outcomes at 9 'no-fee' schools.

Please indicate your interest in the event by [pre-registering via this Qualtrics form](#).

For anyone requiring accessibility accommodations, please contact Crystal Quintanilla at crystal_quintanilla@gse.harvard.edu at least 48 hours in advance.

This event is sponsored by the Office of Student Affairs.

Wednesday, October 26, 3PM-5PM EDT



Calling All Families: Save the Date for the HGSE Halloween Celebration

Please save the date for our annual HGSE Halloween Celebration on Appian Way to be held on Wednesday, October 26th from 3:00pm – 5:00pm in the Gutman Gallery (main floor of Gutman Library). The entire HGSE Community is invited, and family members are welcome - especially the kiddos!

Schedule of Activities:

3:00 pm: Gutman Gallery "trick or treat" and cider/cookies

4:00 pm: Story Time with Special Guest Reader

4:15 pm: Musical Halloween performance by [Matt Heaton](#)

Sponsored by the HGSE Administrative Council for Engagement (ACE)

For anyone requiring accessibility accommodations, please contact Andrea Le (andrea_le@gse.harvard.edu) at least 48 hours in advance.

Wednesday, October 26, 3PM-6PM EDT



The Future Is Now: Harvard Takes On the Climate Challenge

The Salata Institute for Climate and Sustainability's inaugural event on October 26 will offer an occasion to celebrate Harvard University's new climate initiative and discuss the inspiring work that lies ahead for all of us—faculty, students, and staff—as we rise to the global climate change challenge.

Knafel Center, Harvard Radcliffe Institute
10 Garden Street, Cambridge, MA, 02138, United States
3:00–4:30 p.m.: Panel Discussion
4:30–6:00 p.m.: Reception

[RSVP required.](#)

RESPOND BY Tuesday, November 1, 5PM EDT



Call for performers!

The **International Arts Lollapalooza** is an event that will be taking place during [International Education Week](#) on **Thursday, November 17th** from **5:00 – 8:00PM** to celebrate HGSE's international and multicultural community through food, music, dancing, and performances. All students are welcome to sign up to perform or share their culture through art. If you would like to perform or share, **please fill out this [survey](#) by Tuesday November 1st at 5:00PM**. There is no need to be a professional performer to participate, and it is not confined to musical performances - poems, paintings, photography, etc. are welcome! We plan to take a group photo so even if you are not performing, we encourage you to wear your cultural outfit or bring a flag when attending this event.

APPLY BY Tuesday, November 1, 2022



EDMOND & LILY SAFRA
Center for Ethics

Graduate Fellowships in Ethics

The Edmond & Lily Safra Center for Ethics Graduate Fellowship Program invites applications from graduate students who are writing dissertations or are engaged in major research on topics in practical ethics, especially ethical issues in architecture, business, education, government, law, medicine, public health, public policy, and religion. [Click here](#) for more details.

If you have any questions, please contact ejsafrafellowships@fas.harvard.edu or visit <https://apply.ethics.harvard.edu/> for more information.

Thursday, November 17, 12PM-1PM EDT



Gutman Library Virtual Book Talk - Trans Studies in K–12 Education: Creating an Agenda for Research and Practice

[Click here to register.](#)

A vital inquiry into trans issues in education, this compelling work argues for the design of education research, policies, and environments that honor all gender experiences and identities. Edited by two prominent figures in trans studies, Mario I. Suárez and Melinda M. Mangin, *Trans Studies in K–12 Education* brings together scholars and professionals representing a range of academic traditions, research methodologies, and career backgrounds to explore why and how schools should affirm gender diversity and challenge gender-based inequities.

Contact myanne.krivoshey@gse.harvard.edu if you have questions/requests regarding accessibility. Please note that all Gutman Library virtual events are open to the public and are live-captioned.

RAISING AWARENESS OF WORLD EVENTS



Sharing mitigation ideas for children and families who are affected by Thailand Daycare Mass Shooting

On Thursday of October 6, 38 people, including 24 innocent children were killed by a former policeman at a daycare centre in Nong Bua Lam Phu Province, Thailand. The shooter had a history of drug addiction. Amp and Prim, two HGSE student from Thailand created a virtual space to raise awareness for the recent mass shooting and would like to ask HGSE to provide some mitigation ideas or activities for young children and families who are affected by this tragedy.

Amp has been working closely with the Foundation for Child Development and Thai Health Promotion Foundation to find ways to support the victims in both “short and long term”. All the ideas will be submitting to Foundation for Child Development for the further implementation.

Share your mitigation ideas or send your condolence message [here](#).

Please contact Amp Deekong for any questions or suggestions via pdeekong@gse.harvard.edu or 351 220 7923.

Support for those Impacted by the Floods in Pakistan

[Flooding in Pakistan](#) has affected 33 million people and has killed at least 1,325 people. The devastation that the flooding has caused will take many years to recover from and will cost millions of dollars. A group of dedicated HGSE students is asking for the community's support in raising funds to help those affected. Individuals interested in supporting the cause can make donations directly to the organizations listed below that are actively doing relief work in the regions that have been most impacted.

- [Edhi Foundation](#)
- [The Citizen's Foundation \(TCF\)](#)



Support for HGSE Persian Students

As we continue to read about the protests taking place in Iran following the death of Mahsa Amini, the Office of Student Affairs extends its sympathies to all who have been affected, directly or indirectly.

We encourage you to make use of the various [resources](#) available to you should you need additional support at this time. [Staff in the Office of Student Affairs](#) are available to listen and to speak about the supports available to you.

ONGOING OPPORTUNITIES & RESOURCES



TimelyCare: Expanded Access to Counseling Services

Harvard University Health Services (HUHS) is pleased to announce that Counseling and Mental Health Services (CAMHS) has expanded access to counseling services for Harvard students through a partnership with TimelyMD to deliver TimelyCare – a new virtual telehealth and wellbeing platform for students.

Who can use TimelyCare?

Harvard students who are enrolled in degree programs and are presently covered by the Student Health Fee are eligible to access TimelyCare. If students are uncertain about their eligibility, they may call Member Services 617-495-2008 to determine their Student Health Fee status.

Students can access TimelyCare from any web-enabled device. Instructions on how to access the app are available on the [CAMHS website](#).



HBS Behavioral Lab Group Conversation Study

The HBS Behavioral Lab (BeLab) has an in-person Group Conversation Study where you'll be asked to have a 15 minute conversation with 2 - 3 other participants in our lab at 2 Arrow Street, Cambridge, MA!

Anyone interested is welcome to [create an account to sign-up](#) for a session and earn \$12 cash! If you have any questions, please email belab@hbs.edu

The BeLab hosts paid in-person and online research studies created by HBS faculty that investigate diverse topics like decision making, group interactions, and economic behavior.



Access Recording Form

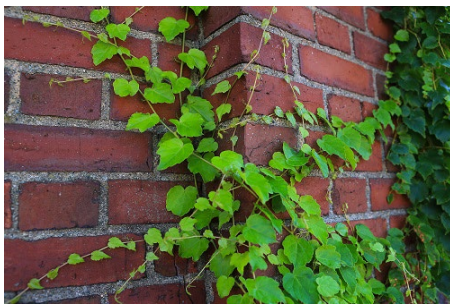
Have you encountered an issue with accessibility during your time at HGSE? Please let us know by filling out the [Access Recording Form](#).



Registration Open: Harvard Community Bus Trips to the Forest

Harvard students, faculty, fellows, and staff may now sign up for one of several free monthly bus trips to visit Harvard Forest, located 70 miles west of Harvard Square.

Trips fill up quickly! To learn more and register, [click here](#).



HGSE COVID Policy

[Coronavirus: HGSE Looks Forward.](#)

The health and safety of our community members, their families, and the public remain a top priority. Please check out our current policies and procedures, especially what to do if you test positive for COVID-19.



Reminder to Report Positive COVID Test Results through Crimson Clear

Students should report positive COVID test results immediately through [Crimson Clear](#). (If you use the Harvard Color testing system, this will be done automatically.) Reporting this information is essential for our ability to monitor health conditions in our community, and doing so will prompt Harvard University Health Services (HUHS) to contact you via your Harvard email to provide guidance on treatment options and next steps, including instructions about isolation and notifying your close contacts. You are also encouraged to complete the self-assessment form on Crimson Clear if you are experiencing symptoms or would like guidance after a potential exposure to COVID.

In the event that you must isolate, you must also notify your instructors of any necessary absences from class, though you do not need to share your specific COVID diagnosis. The Office of Student Affairs also stands ready to offer support in contacting instructors and getting access to care if you contact them.



Student Conference Fund Application

2022-2023 HGSE Student Conference Fund HGSE is committed to supporting the academic and professional development of students both within and outside of the classroom. The Student Conference Fund seeks to help defray the cost of travel and registration fees for students who are presenting or attending conferences. Students who are presenting are eligible for up to \$750 in funding; students who are attending are eligible for up to \$500 in funding. All conferences must align with the mission of HGSE.

[Click here to apply.](#)

**GRADUATE INTRAMURAL
SPORTS LEAGUE**



Come participate in the inaugural Graduate Intramural Sports League!
To sign-up and learn more click on the link or scan the QR code below.

Flag Football	Volleyball
Ultimate Frisbee	Futsal
Soccer	Basketball
AND MORE!!!	



SCAN HERE!!!



Graduate Intramural Sports League

Come participate in the inaugural Graduate Intramural Sports League!

Sports include flag football, volleyball, ultimate frisbee, futsal, soccer, basketball, and more!

This opportunity is open to all Harvard graduate and professional students. Intramural sports are casual sport competitions that invites all levels of experience to participate in with low levels of commitment.

To sign-up and learn more [click here!](#)



Interested in creating or reactivating a student organization at HGSE?

The student organization recognition process is now open!

A student organization is defined as a group of HGSE students who unite to promote or celebrate a common interest. Each organization leaves its special mark on the cultural, social, and intellectual life of HGSE. The content of any student organized event should address an academic, cultural, or social need.

To learn more about the benefits of official recognition, to submit your request, and to access the student organization training [click here](#).



Mindfulness for Students at the Center for Wellness and Health Promotion

As we start the new semester here at [CWHP](#), we are excited to offer a variety of mindfulness programs to support your wellbeing. Subscribe to the monthly newsletter [here](#) for more information on wellness offerings, classes, and workshops!

WAGs

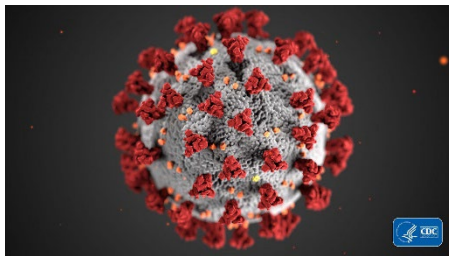
Join Student Support Services Academic Coaches in our weekly **WORKING ACCOUNTABILITY GROUPS!**

More information and Zoom links on the Hub.



Work Accountability Groups

Student Support Services hosts weekly Work Accountability Groups (WAGs) on Zoom. These accountability groups will hold space for students to gather and work in a supportive environment. Each WAG is 2 hours long and they are hosted multiple times throughout the week. For more information and to join, and please [visit here](#).



CORONAVIRUS: ADVICE FOR TRAVELERS

Certain Harvard-related travel is permitted for fully-vaccinated affiliates. [Review our advice](#) for developing a safe travel plan if you decide to travel amid the COVID-19 pandemic.

HGSE OFFICE OF DIVERSITY, EQUITY, AND INCLUSION



Office of Diversity, Equity, and Inclusion

Student Drop-In Hours

WEDNESDAY 10/19	2:00 - 3:00	GUTMAN LIBRARY LOBBY
---------------------------	--------------------	-----------------------------

Stop by the Office of Diversity, Equity, and Inclusion (ODEI) table to meet Greg Saint-Dick, Director of DEI - Student Development Lead and Dorie Campbell, DEI Specialist. Bring your ideas and questions about DEI at HGSE!

@HGSE_ODEI

HGSE's Office of Diversity, Equity, and Inclusion Student Drop-In Hours

Wednesday, October 19
2:00 – 3:00 p.m.
Gutman Library Lobby

Stop by the Office of Diversity, Equity, and Inclusion (ODEI) table to meet Greg Saint-Dick, Director of DEI - Student Development Lead and Dorie Campbell, DEI Specialist. Bring your ideas and questions about DEI at HGSE!



Follow the new ODEI Twitter & Instagram to stay updated on upcoming events!

Twitter: https://twitter.com/HGSE_ODEI

Instagram: https://www.instagram.com/hgse_odei/

RELIGIOUS RESOURCES



Harvard Chaplains

The Harvard Chaplains, a professional community of more than thirty chaplains, represent many of the world's religious, spiritual, and ethical traditions, and share a collective commitment to serving the spiritual needs of the students, faculty, and staff of Harvard University. Learn more on the [Chaplains website](#).



Prayer Space on the HGSE Campus

Longfellow 214 is a dedicated prayer space here on the HGSE campus. Recognizing that not all buildings are open during the weekends, Gutman 440 has been reserved as prayer space on Saturday and Sundays, during regular Library hours.



The Memorial Church of Harvard University

The Memorial Church of Harvard University, part of a [vibrant interfaith network of Harvard](#), is an interdenominational Protestant church in the midst of Harvard Yard that serves as a place of spiritual refuge to the entire community. "MemChurch" stands opposite Widener Library as a visible reminder of the historical and spiritual heritage that has sustained Harvard for nearly four centuries. In addition to our [regularly](#)

[scheduled services](#), we also offer a variety of [programming](#) for students, adults, and children.



Harvard Hillel

[Harvard Hillel](#) is a Jewish home on campus that seeks to:

- Welcome students to experience the variety of Jewish identity, tradition, practice, values, culture, and community.
- Inspire and enable Jewish connection, celebration, and action.
- Prepare students to join, create, shape, and lead Jewish communities; strengthen the Jewish people, and live proud Jewish lives.
- Share Jewish sources, traditions, ideas, and innovations, and their relevance in our world.
- Forge connection and engagement with the State of Israel.
- Foster friendship in a nurturing and refreshing sanctuary amid the stresses of student life.
- Engage the unique opportunities of Harvard and make Jewish thought and culture integral in the life of the University.



Please Note: In addition to student events and resources, the *HGSE Weekly Newsletter* is the official communication channel for important information regarding Commencement.



HGSE Weekly is a publication of the Office of Student Affairs at the Harvard Graduate School of Education.

Our mailing address is:

Harvard Graduate School of Education
13 Appian Way
Cambridge, MA 02138 US

HARVARD



GRADUATE SCHOOL
OF EDUCATION

[unsubscribe from all emails](#) [update subscription preferences](#) [update profile](#)