

# — HGSE — Weekly

Office of  
Student Affairs



Monday, January 9, 2023

## WHAT YOU NEED TO KNOW

- [Academic Coaching](#)
- [Accessibility and Accommodations](#)
- [Connecting with OSA Virtually](#)
- [Quick Links](#)
- [Yoga and Mindfulness](#)
- [Work Accountability Groups](#)
- [I Notice/I Care Form](#)
- [Food Insecurity Resources / Winter Clothes & Furniture Resources](#)

PLACE YOUR ORDER BY: Tuesday, January 10, 11:59PM EST



## ORDERING DEADLINE EXTENDED for MBTA Spring Semester Passes

This is your **last chance to order a semester pass for Spring 2023!**

There are a number of different pass types available (*Local Bus, Link Pass, Commuter Rail*), so be sure to check which pass would best fit for you. For pass descriptions, please visit the [MBTA website](#).  
*Please note:* the semester pass does NOT cover the month of January.

As a reminder, all purchases are final sale and are non-refundable. Place your order [here](#) **before midnight on Tuesday.**

Notification to pickup your T pass will be sent out at the end of January.

## THIS WEEK





### Data Wrangling and Exploration in R with Joe McIntyre

Conducting quantitative analyses requires clean, nicely structured data. However, data in the real world are frequently messy, stored in multiple different locations, and organized in unhelpful ways. This course will focus on using R to organize, or “wrangle,” data to prepare them for analysis. Topics will include basic data management, as well as merging, collapsing, and reshaping. After doing the data wrangling, we'll also see how we can explore the data, using simple tools to create effective summaries. This workshop requires at least some familiarity with R (e.g., by taking S040 or taking the introduction to R workshop in early January), but does not require any specific statistics course as a prerequisite.

To sign up, [click here](#).  
[Click here](#) for the Zoom link.

Thursday, January 12, 6PM-8PM EST



### Sharing Our Voices: Healing, Reimagining, Community, and Collectivity through Spoken Word Poetry

Longfellow 320/319

[Register](#) by this Tuesday, January 10th

During this session, **Jarvis Subia, Ed.M. '22** will facilitate two workshops from a series rooted in preparing students to disrupt and dismantle racism in the classroom and in everyday life. Participants will focus their time on the “Healing & Reimagining” and “Community & Collectivity.” Components will include discussing sections of larger academic papers, reading/watching poetry, poetry prompts, freewriting, and collective sharing of our voices. These workshops were developed by Jarvis during his time at HGSE.

*Sponsored by the HGSE Alumni Engagement Team.  
For accessibility accommodations, please contact [alumserv@gse.harvard.edu](mailto:alumserv@gse.harvard.edu).*

**HGSE COMMONS CAFE**



### Menu for the Week of January 9th through the 13th

The Commons Cafe is open from 7AM until 3PM. Check out the daily specials prepared by the Rebecca's Culinary team!

To view this week's menu, [click here](#).

## FUTURE EVENTS AND OPPORTUNITIES

Wednesday, January 18, 12PM-1PM EST (Virtual)



### Exploring Science through Food: Brown Butter Popcorn

Think more closely, observe, and appreciate the phenomena of everyday cooking. In this one-hour virtual event, **Kate Strangfeld, Ed.M. '22** and **Hallie Rockwell, Ed.M. '22**, of [Bite Sized Education](#), will demonstrate and make brown butter and homemade popcorn while learning the science behind these simple, yet fascinating processes. To register, [click here](#).

*Sponsored by the HGSE Alumni Engagement Team.  
For accessibility accommodations, please contact [alumserv@gse.harvard.edu](mailto:alumserv@gse.harvard.edu).*

Thursday, January 19, 6PM-7:30PM EST (Virtual)



## Career Paths for Educators with Disabilities Panel

Join the Office of Diversity, Equity, and Inclusion, Alumni Engagement, Career Services & the Students with Disabilities Union on Zoom as we talk with Harvard-affiliated educators committed to accessibility about career paths for students with disabilities & students interested in accessibility.

[Register here.](#)

**Thursday, January 19 and Thursday, January 20, 10:30AM - 11:30M EST**



## An Introduction to Geographic Information System (GIS) Software with Applications to Educational Data

This two-day workshop introduces the basics of a Geographic Information System (GIS) and performing simple analysis with linear regression (in R). It is designed for participants who have little to no GIS or web mapping experience. The workshop will focus on ArcGIS, the predominant GIS software, but alternatives such as QGIS and Google Earth will also be mentioned. The workshop includes interactive exercises that have you load, stylize, and analyze traffic crash report data to build your own education policy web map with ArcGIS Online. You will then explore various options for publishing the web map online, ultimately publishing a shareable story with ArcGIS Story Maps.

Requirements: Participants must have their Harvard ArcGIS Online account set up prior to the workshop (for instructions see <https://gis.harvard.edu/arcgis-online>)

Register [here](#).

[Click here](#) for the Zoom link.

**Friday, January 20, 8AM-6PM EST**



## Global Education Conference: Restoring Educational Opportunity After a Pandemic

### **Gutman Conference Center**

Join the graduate students in the course, Education Policy Analysis and Research in Comparative Perspective, who will discuss their work with government leaders around the world, examining the educational impact of the COVID-19 pandemic three years in.

This conference is free and open to the public.

For more information, [click here](#).

**Monday, January 23, 5PM EST**



## SAVE THE DATE: HGSE Lunar New Year Celebration

### **Gutman Conference Center**

The Pan Asian Coalition for Education (PACE) and the Office of Student Affairs (OSA) are celebrating Lunar New Year and the Year of the Rabbit!

Mark your calendars for Monday, January 23rd, 5PM to 9PM ET.

*If you require accessibility accommodations, please contact the OSA at [osa@gse.harvard.edu](mailto:osa@gse.harvard.edu) at least 48 hours in advance.*

**RESPOND BY Thursday, January 26**



## January Self-Care Raffle

Welcome back!

We hope you had a restful break. Whether you are taking JTerm classes or enjoying some time away from HGSE, we hope these prizes can provide space for relaxation, restoration, and self-care in the new year.

Please fill out [this form](#) by **Thursday, January 26th at midnight**. Winners will be announced on Friday, January 27th.

**APPLY BY Friday, January 27**



### What is the Harvard University Peer Coaching Initiative?

A two-time winner of the Culture Lab Innovation Fund, the HUPCI is a non-credit professional development opportunity. Participants:

- Develop their leadership and collaboration skills
- Get to know Peers from elsewhere in the University
- Stay more centered and productive during their time at Harvard

To learn more and to register for the Spring program, [click here](#).

**Friday, February 3, 12PM-2PM EST**

HGSE ALUMNI ENGAGEMENT  
**ALUMNI IN RESIDENCE**



**Aaron Dworkin, Ed.M. '04**  
CEO  
National Summer Learning Association

**February 3, 2023**  
Longfellow 228, HGSE Campus

This session will be held between 12:00 - 2:00pm ET. Each student will sign up for a 20-minute timeslot to meet with Aaron about their career aspirations and to ask him questions.

Learn more about Aaron & register at [bit.ly/AaronDworkinAIR](https://bit.ly/AaronDworkinAIR)

Questions? Email [alumserv@gse.harvard.edu](mailto:alumserv@gse.harvard.edu)

### Alumni in Residence: Aaron Dworkin, Ed.M. '04 Longfellow 228

HGSE Alumni Engagement is excited to launch their Alumni in Residence Program, which will give students the opportunity to meet with alumni to learn more about their career paths and ask burning questions.

The inaugural session will feature Aaron Dworkin, Ed.M. '04, CEO of National Summer Learning Association.

To learn more and to register, [click here](#). Please contact [alumserv@gse.harvard.edu](mailto:alumserv@gse.harvard.edu) with any questions and to request accessibility accommodations.

**SAVE THE DATE: Saturday, February 11 - Sunday, February 12**



### 20th Annual India Conference at Harvard

The conference organizers aim to gather leading policymakers, business leaders, cultural icons, and academic experts to help you - future entrepreneurs, investors, politicians, social activists, artists, and leaders of note - build an informed opinion on what the next 25 years hold in store for the Indian Republic.

This year's theme? Vision 2047: India at 100 years of Independence.

Tickets are [on sale now!](#)

**Thursday, February 23, 6PM EST**

## HGSE Black History Month Celebration



### Calling all performers!

The Office of Student Affairs invites you to celebrate Black History Month. Students interested in performing (songs, dance, poetry reading, spoken word, etc.) please email [andres\\_galindo@gse.harvard.edu](mailto:andres_galindo@gse.harvard.edu).

There will be food, music, and plenty of black joy to go around!

**Monday, February 27, 12PM-1PM EST (Virtual)**

**Making Black Girls Count  
in Math Education**  
*A Black Feminist Vision for Transformative Teaching*

Dr. Nicole M. Joseph

Monday, February 27, 2023  
12-1p.m. EST

### Gutman Library Virtual Book Talk - Making Black Girls Count in Math Education: A Black Feminist Vision for Transformative Teaching

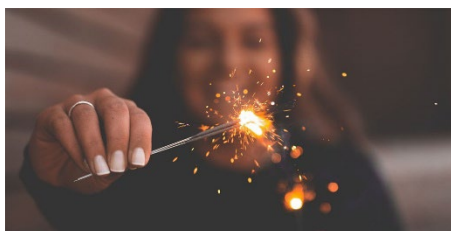
Register here: [bit.ly/MakingBlackGirlsCount](https://bit.ly/MakingBlackGirlsCount)

Making Black Girls Count in Math Education explores the experiences of Black girls and women in mathematics from preschool to graduate school, deftly probing race and gender inequity in STEM fields.

Learn more about this book [here](#).

Please contact [myanne\\_krivoshey@gse.harvard.edu](mailto:myanne_krivoshey@gse.harvard.edu) if you have questions/requests regarding accessibility. *All of Gutman Library virtual events are open to the public and are live-captioned.*

## ONGOING OPPORTUNITIES & RESOURCES



### Val's Monthly Financial Wellness Tip

How Students Can Keep Their Financial New Year's Resolutions!

Deciding on your resolutions is the easy part; the challenge becomes figuring out how to keep them. Goals can be great, but only if they're finished, and when students come across money problems, reaching their financial goals can be difficult.

[Click here](#) to learn more.

*Presented by the HGSE Financial Aid Office.*



### Join the Harvard Innovation Labs

The i-lab invites you to run with your ideas! Members are granted all-inclusive passes to access their workshops, networks, funding opportunities, and an invaluable community of like-minded peers.

Join by yourself or with a team.

Applications are open from December to March. [Click here](#) to learn more and join.



### AAPI 'In Our Own Words' – Instagram Feature

In Our Own Words is a HGSE project born out of the Cultural Lab Innovation Fund that seeks to use storytelling to empower the AAPI community to claim their own narratives.

We're in the process of collecting 'snapshot' stories to feature on our Instagram/website (just like Junlei!) and can't wait to hear from our AAPI community. If you are interested in being featured, please fill out [this short survey](#) or contact us at [harvardaapistories@gmail.com](mailto:harvardaapistories@gmail.com).



### Work Accountability Groups

Student Support Services hosts weekly Work Accountability Groups (WAGs) on Zoom. These accountability groups will hold space for students to gather and work in a supportive environment. Each WAG is 2 hours long and they are hosted multiple times throughout the week. For more information and to join, and please [visit here](#).



### Tech Lending at Gutman Library!

Did you know that HUID holders can borrow tech equipment from Gutman's circulation desk (2nd Floor)?

Please note that our collection has recently expanded and is still growing, so keep checking back for newly added items! To learn about what we currently have, please visit the circulation desk on the second floor or go to [tinyurl.com/yz2puj4y](https://tinyurl.com/yz2puj4y).



### Mindfulness for Students at the Center for Wellness and Health Promotion

As we start the new semester here at [CWHP](#), we are excited to offer a variety of mindfulness programs to support your wellbeing. Subscribe to the monthly newsletter [here](#) for more information on wellness offerings, classes, and workshops!



### Student Conference Fund Application

2022-2023 HGSE Student Conference Fund HGSE is committed to supporting the academic and professional development of students both within and outside of the classroom. The Student Conference Fund seeks to help defray the cost of travel and registration fees for students who are presenting or attending conferences. Students who are presenting are eligible for up to \$750 in funding; students who are attending are eligible for up to \$500 in funding. All conferences must align with the mission of HGSE.

[Click here to apply.](#)



### Interested in creating or reactivating a student organization at HGSE?

A student organization is defined as a group of HGSE students who unite to promote or celebrate a common interest. Each organization leaves its special mark on the cultural, social, and intellectual life of HGSE. The content of any student organized event should address an academic, cultural, or social need.

To learn more about the benefits of official recognition, to submit your request, and to access the student organization training [click here](#).



### Access Recording Form

Have you encountered an issue with accessibility during your time at HGSE? Please let us know by filling out the [Access Recording Form](#).

## RELIGIOUS RESOURCES



### Harvard Chaplains

#### Harvard Chaplains

The Harvard Chaplains, a professional community of more than thirty chaplains, represent many of the world's religious, spiritual, and ethical traditions, and share a collective commitment to serving the spiritual needs of the students, faculty, and staff of Harvard University. Learn more on the [Chaplains website](#).



#### Prayer Space on the HGSE Campus

Longfellow 214 is a dedicated prayer space here on the HGSE campus. Recognizing that not all buildings are open during the weekends, Gutman 440 has been reserved as prayer space on Saturday and Sundays, during regular Library hours.



#### The Memorial Church of Harvard University

The Memorial Church of Harvard University, part of a [vibrant interfaith network of Harvard](#), is an interdenominational Protestant church in the midst of Harvard Yard that serves as a place of spiritual refuge to the entire community. "MemChurch" stands opposite Widener Library as a visible reminder of the historical and spiritual heritage that has sustained Harvard for nearly four centuries. In addition to our [regularly scheduled services](#), we also offer a variety of [programming](#) for students, adults, and children.



### Harvard Hillel

Harvard Hillel is a Jewish home on campus that seeks to:

- Welcome students to experience the variety of Jewish identity, tradition, practice, values, culture, and community.
- Inspire and enable Jewish connection, celebration, and action.
- Prepare students to join, create, shape, and lead Jewish communities; strengthen the Jewish people, and live proud Jewish lives.
- Share Jewish sources, traditions, ideas, and innovations, and their relevance in our world.
- Forge connection and engagement with the State of Israel.
- Foster friendship in a nurturing and refreshing sanctuary amid the stresses of student life.
- Engage the unique opportunities of Harvard and make Jewish thought and culture integral in the life of the University.



**Please Note:** In addition to student events and resources, the *HGSE Weekly Newsletter* is the official communication channel for important information regarding Commencement.



HGSE Weekly is a publication of the Office of Student Affairs at the Harvard Graduate School of Education.

**Our mailing address is:**

Harvard Graduate School of Education  
13 Appian Way  
Cambridge, MA 02138 US

HARVARD



GRADUATE SCHOOL  
OF EDUCATION

[unsubscribe from all emails](#) [update subscription preferences](#) [update profile](#)