

— HGSE — Weekly

Office of
Student Affairs



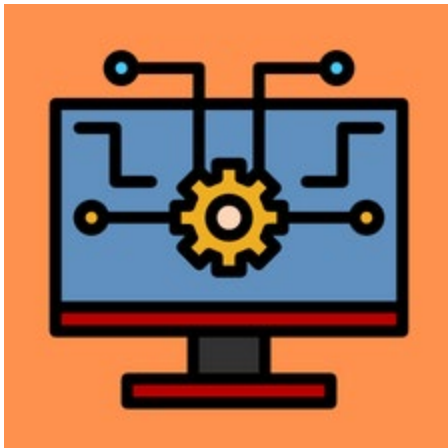
Tuesday, January 3, 2023

WHAT YOU NEED TO KNOW

- [Academic Coaching](#)
- [Accessibility and Accommodations](#)
- [Connecting with OSA Virtually](#)
- [Quick Links](#)
- [Yoga and Mindfulness](#)
- [Work Accountability Groups](#)
- [I Notice/I Care Form](#)
- [Food Insecurity Resources / Winter Clothes & Furniture Resources](#)

THIS WEEK

Wednesday, January 4 and Thursday, January 5, 1PM - 3PM EST



Introduction to R with Joe McIntyre

R is a powerful and free software tool for statistical analysis that is becoming a major force in social science research, policy analysis, statistics, and data science. This workshop will cover downloading and running R and RStudio, reading and wrangling data, data analysis (focusing on OLS regression), creating plots using core R and ggplot2, statistical programming and simulation, automated document creation with RMarkdown, creating data visualizations with Shiny, and other topics, time permitting.

To register, [click here](#).
[Click here](#) for the Zoom link.

ORDERING DEADLINE: Friday, January 6, 11:59PM EST



MBTA Spring 2023 Semester Passes - Place Your Order Today!

The HGSE Office of Student Affairs is pleased to share that we are able to offer MBTA Semester passes at a 25% reduced rate for all students. To receive this discount, students must purchase the pass for the entire four-month period (February 1st through May 31st), through the HGSE marketplace portal.

Please note: the MBTA Semester Program does not issue a reduced fare pass for the month of January.

There are a number of different pass types available (*Local Bus, Link Pass, Commuter Rail*), so be sure to check which pass would best fit your needs. For pass descriptions, please visit the [MBTA website](#).

As a reminder, all purchases are final sale and are non-refundable.

To place your order, [click here](#).

FUTURE EVENTS AND OPPORTUNITIES

DEADLINE TO APPLY: Monday, January 9, 11:59PM EST



Apply now to join the Cross-Harvard Future of Work Study Group!

The Cross-Harvard Future of Work Study Group brings together ~60 Harvard students to learn about the future of work from leading practitioners and to build cross-sector connections with students, faculty, and alumni. The study group will run in Spring 2023 and be devoted to community learning through speakers, small discussion groups, and optional hands-on experiences.

- Apply to join the group [here](#)
- View the info session recording and slides [here](#)
- [Join](#) the Project on Workforce Slack Group
- Reach out to fowstudygroup@hks.harvard.edu with any questions

Wednesday, January 11, 12PM-1PM EST (Virtual)



Sharing Our Voices: Healing, Reimagining, Community, and Collectivity through Spoken Word Poetry

Longfellow 320/319

[Register](#) by this Friday, January 6th

During this session, **Jarvis Subia, Ed.M. '22** will facilitate two workshops from a series rooted in preparing students to disrupt and dismantle racism in the classroom and in everyday life. Participants will focus their time on the “Healing & Reimagining” and “Community & Collectivity.” Components will include discussing sections of larger academic papers, reading/watching poetry, poetry prompts, freewriting, and collective sharing of our voices. These workshops were developed by Jarvis during his time at HGSE.

*Sponsored by the HGSE Alumni Engagement Team.
For accessibility accommodations, please
contact alumserv@gse.harvard.edu.*

Wednesday, January 18, 12PM-1PM EST (Virtual)



Exploring Science through Food: Brown Butter Popcorn

Think more closely, observe, and appreciate the phenomena of everyday cooking. In this one-hour virtual event, **Kate Strangfeld, Ed.M. '22** and **Hallie Rockwell, Ed.M. '22**, of [Bite Sized Education](#), will demonstrate and make brown butter and homemade popcorn while learning the science behind these simple, yet fascinating processes. To register, [click here](#).

*Sponsored by the HGSE Alumni Engagement Team.
For accessibility accommodations, please
contact alumserv@gse.harvard.edu.*

Thursday, January 19 and Thursday, January 20, 10:30AM - 11:30M EST



An Introduction to Geographic Information System (GIS) Software with Applications to Educational Data

This two-day workshop introduces the basics of a Geographic Information System (GIS) and performing simple analysis with linear regression (in R). It is designed for participants who have little to no GIS or web mapping experience. The workshop will focus on ArcGIS, the predominant GIS software, but alternatives such as QGIS and Google Earth will also be mentioned. The workshop includes interactive exercises that have you load, stylize, and analyze traffic crash report data to build your own education policy web map with ArcGIS Online. You will then explore various options for publishing the web map online, ultimately publishing a shareable story with ArcGIS Story Maps.

Requirements: Participants must have their Harvard ArcGIS Online account set up prior to the workshop (for instructions see <https://gis.harvard.edu/arcgis-online>)

Register [here](#).
[Click here](#) for the Zoom link.

APPLY BY Friday, January 27



What is the Harvard University Peer Coaching Initiative?

A two-time winner of the Culture Lab Innovation Fund, the HUPCI is a non-credit professional development opportunity. Participants:

- Develop their leadership and collaboration skills
- Get to know Peers from elsewhere in the University
- Stay more centered and productive during their time at Harvard

To learn more and to register for the Spring program, [click here](#).

SAVE THE DATE: Saturday, February 11 - Sunday, February 12



20th Annual India Conference at Harvard

The conference organizers aim to gather leading policymakers, business leaders, cultural icons, and academic experts to help you - future entrepreneurs, investors, politicians, social activists, artists, and leaders of note - build an informed opinion on what the next 25 years hold in store for the Indian Republic.

This year's theme? Vision 2047: India at 100 years of

Independence.

Early bird tickets are [on sale now](#).

ONGOING OPPORTUNITIES & RESOURCES



Join the Harvard Innovation Labs

The i-lab invites you to run with your ideas! Members are granted all-inclusive passes to access their workshops, networks, funding opportunities, and an invaluable community of like-minded peers.

Join by yourself or with a team.

Applications are open from December to March. [Click here](#) to learn more and join.



AAPI 'In Our Own Words' – Instagram Feature

In Our Own Words is a HGSE project born out of the Cultural Lab Innovation Fund that seeks to use storytelling to empower the AAPI community to claim their own narratives.

We're in the process of collecting 'snapshot' stories to feature on our Instagram/website (just like Junlei!) and can't wait to hear from our AAPI community. If you are interested in being featured, please fill out [this short survey](#) or contact us at harvardaapistories@gmail.com.

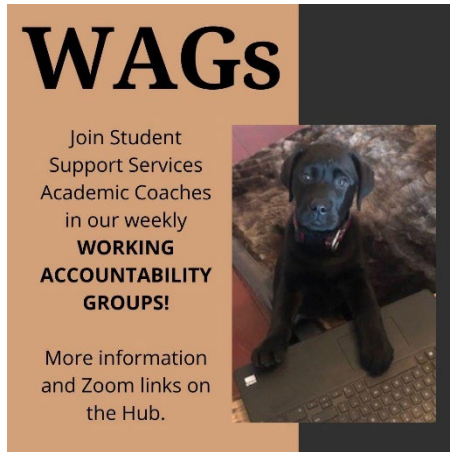


Participate in the HGSE Achieve English pilot program – an informal learning opportunity offered by the HGSE Writing Center and the Office of Student Affairs

Now through May 2023

Want to improve English grammar in your writing or learn to cite in APA/Chicago style? Participate in the HGSE Achieve English program. As an Achieve participant, you will have access to adaptive exercises, personalized grammar learning plans, study materials as well as a four-year access to Dr. Nancy Sommers's A Pocket Style Manual. Sign up now before the 100 slots are gone. You will receive an access code and detailed instructions about using the product upon sign-up. The product is free and a self-paced informal learning opportunity.

Questions? Email communicate@gse.harvard.edu.
[Sign up here.](#)

A promotional graphic for WAGs. The left side has a tan background with the text 'WAGs' in large black letters. Below it, it says 'Join Student Support Services Academic Coaches in our weekly WORKING ACCOUNTABILITY GROUPS!'. At the bottom, it says 'More information and Zoom links on the Hub.' The right side features a black dog sitting on a laptop keyboard.

WAGs

Join Student Support Services Academic Coaches in our weekly **WORKING ACCOUNTABILITY GROUPS!**

More information and Zoom links on the Hub.

Work Accountability Groups

Student Support Services hosts weekly Work Accountability Groups (WAGs) on Zoom. These accountability groups will hold space for students to gather and work in a supportive environment. Each WAG is 2 hours long and they are hosted multiple times throughout the week. For more information and to join, and please [visit here](#).

A graphic for Tech Lending at Gutman Library. It has a blue background with the text 'TECH LENDING AT GUTMAN!' in white. Below the text is a red and white power adapter with the Harvard logo and 'GUTMAN LIBRARY' printed on it.

TECH LENDING AT GUTMAN!

Tech Lending at Gutman Library!

Did you know that HUID holders can borrow tech equipment from Gutman's circulation desk (2nd Floor)?

Please note that our collection has recently expanded and is still growing, so keep checking back for newly added items! To learn about what we currently have, please visit the circulation desk on the second floor or go to tinyurl.com/yz2puj4y.



Mindfulness for Students at the Center for Wellness and Health Promotion

As we start the new semester here at [CWHP](#), we are excited to offer a variety of mindfulness programs to support your wellbeing. Subscribe to the monthly newsletter [here](#) for more information on wellness offerings, classes, and workshops!



Student Conference Fund Application

2022-2023 HGSE Student Conference Fund HGSE is committed to supporting the academic and professional development of students both within and outside of the classroom. The Student Conference Fund seeks to help defray the cost of travel and registration fees for students who are presenting or attending conferences. Students who are presenting are eligible for up to \$750 in funding; students who are attending are eligible for up to \$500 in funding. All conferences must align with the mission of HGSE.

[Click here to apply.](#)



Interested in creating or reactivating a student organization at HGSE?

A student organization is defined as a group of HGSE students who unite to promote or celebrate a common interest. Each organization leaves its special mark on the cultural, social, and intellectual life of HGSE. The content of any student organized event should address an academic, cultural, or social need.

To learn more about the benefits of official recognition, to submit your request, and to access the student organization training [click here](#).



Access Recording Form

Have you encountered an issue with accessibility during your time at HGSE? Please let us know by filling out the [Access Recording Form](#).

RELIGIOUS RESOURCES



Harvard Chaplains

Harvard Chaplains

The Harvard Chaplains, a professional community of more than thirty chaplains, represent many of the world's religious, spiritual, and ethical traditions, and share a collective commitment to serving the spiritual needs of the students, faculty, and staff of Harvard University. Learn more on the [Chaplains website](#).



Prayer Space on the HGSE Campus

Longfellow 214 is a dedicated prayer space here on the HGSE campus. Recognizing that not all buildings are open during the weekends, Gutman 440 has been reserved as prayer space on Saturday and Sundays, during regular Library hours.



The Memorial Church of Harvard University

The Memorial Church of Harvard University, part of a [vibrant interfaith network of Harvard](#), is an interdenominational Protestant church in the midst of Harvard Yard that serves as a place of spiritual refuge to the entire community. “MemChurch” stands opposite Widener Library as a visible reminder of the historical and spiritual heritage that has sustained Harvard for nearly four centuries. In addition to our [regularly scheduled services](#), we also offer a variety of [programming](#) for students, adults, and children.



Harvard Hillel

[Harvard Hillel](#) is a Jewish home on campus that seeks to:

- Welcome students to experience the variety of Jewish identity, tradition, practice, values, culture, and community.
- Inspire and enable Jewish connection, celebration, and action.
- Prepare students to join, create, shape, and lead Jewish communities; strengthen the Jewish people, and live proud Jewish lives.
- Share Jewish sources, traditions, ideas, and innovations, and their relevance in our world.
- Forge connection and engagement with the State of Israel.
- Foster friendship in a nurturing and refreshing sanctuary amid the stresses of student life.
- Engage the unique opportunities of Harvard and make Jewish thought and culture integral in the life of the University.



Please Note: In addition to student events and resources, the HGSE Weekly Newsletter is the official communication channel for important information regarding Commencement.



HGSE Weekly is a publication of the Office of Student Affairs at the Harvard Graduate School of Education.

Our mailing address is:

Harvard Graduate School of Education
13 Appian Way
Cambridge, MA 02138 US

HARVARD



GRADUATE SCHOOL
OF EDUCATION

[unsubscribe from all emails](#) [update subscription preferences](#) [update profile](#)