

— HGSE — Weekly

Office of
Student Affairs



Monday, May 6, 2024

WHAT YOU NEED TO KNOW

- [Academic Coaching](#)
- [Accessibility and Accommodations](#)
- [Connecting with OSA Virtually](#)
- [Quick Links](#)
- [Yoga and Mindfulness](#)
- [Work Accountability Groups](#)
- [I Notice/I Care Form](#)
- [Food Insecurity Resources / Clothes & Furniture Resources](#)
- [Support Resources in Times of Crisis](#)

HIGHLIGHTED ANNOUNCEMENTS

Announcing the Launch of the Crimson Cupboard

CRIMSON CUPBOARD



The Office of Student Affairs has a limited number of shelf-stable food items available to students who may be facing food insecurity. To access the cupboard, please fill out this [brief survey](#) with your contact information.

Rilda Kissel (Associate Director of Student Support Services) will follow up to arrange a time for students to access the pantry.



Graduating Students – Reserve your Commencement Tickets and RSVP for Commencement Events

The [Commencement Ticket Ordering form](#) is now open. All graduating students should complete the ticket ordering form to reserve their tickets for the University Commencement Exercises and the HGSE Presentation of Diplomas. RSVP opportunities for additional events taking place [during Commencement Week](#), as well as submission of information for guests with disabilities is included in the form as well.

Important: Graduating students are required to complete the end-of-year HGSE Student Experience Survey in order to receive their reserved Commencement tickets. The survey will be available to you via email beginning May 1. You will be asked to display your survey completion email (on a device or print-out) to ticket staff at the time of pickup.



HARVARD
UNIVERSITY

How do we nurture and reinforce a culture of open inquiry, constructive dialogue, and academic freedom at Harvard?
Share your thoughts!

In an [announcement](#) last month, President Garber and Provost Manning launched two working groups to address aspects of our campus climate that are critical to the success of Harvard's mission of teaching, learning, and research. You are invited to join the discussion.

Institutional Voice Sessions
Thursday, May 9, 11:00 am-12:00 pm over Zoom, [RSVP for this session](#)
Friday, May 10, 1:30-2:30 pm, Smith Campus Center, Cambridge, [RSVP for this session](#)

Open Inquiry Sessions
Wednesday, May 8, 3:30-4:30 in Cambridge, [RSVP for this session](#)
Monday, May 20, 3:30-4:30 pm in Cambridge, [RSVP for this session](#)

Note that RSVPs are required and the location of each discussion will be shared with those that register.

If you are unable to attend please share your feedback by emailing institutionalvoice@harvard.edu or openinquiryworkinggroup@harvard.edu. Additionally, you may submit feedback via the Institutional Voice Working Group's [anonymous form](#). **Learn more about both groups' [charge and membership](#) on the Provost's Office website.**

EXTENDED to Sunday, May 12



Pining for an HGSE pin? It's your lucky day – Class Gift Campaign Extended!

There's still time to make your "class gift" donation of \$20.24.

Give by May 12 to be recognized in the commencement program!

You'll also receive a special HGSE shield lapel pin to wear at graduation! Join the 200 students who have already participated, and support financial aid for future HGSE students. **[Give today.](#)**

THIS WEEK

Tuesday, May 7, 5:30PM-7PM EDT (In-Person)



Coping Skills for Summer Support: Workshop for Survivors

Who: **Undergraduate and graduate students (maximum of 10)**

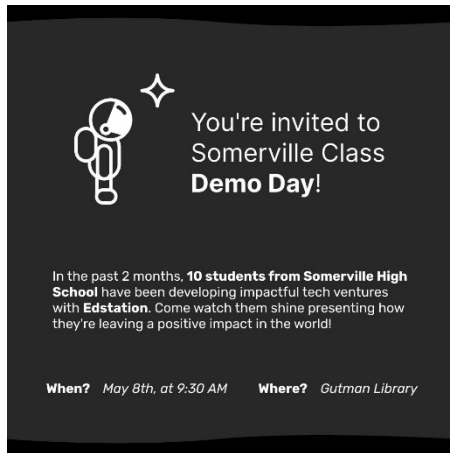
What: **A workshop for participants to practice coping skills that can support survivors in feeling more grounded**

Why: **We know that the end of the semester can be a particularly challenging time of transition for survivors. As such, we are offering an opportunity to help students in making a support plan for these transitions.**

Cost: **Free**

Interested students must email oge_SHARE@harvard.edu to RSVP and have a brief check-in call with Claire Geruson before entering the group. Unfortunately, this is an RSVP-only workshop.

Wednesday, May 8, 9:30AM EDT (In Person)



Somerville High School Class Demo Day

Join S997 students for the Somerville High School Class Demo Day, where students will be presenting their tech ventures developed over the past two months in collaboration with Edstation. Witness the debut pitches from these future entrepreneurs and share your insights to inspire the next generation of innovators!

For more information contact [Anny Chan](#).

Wednesday, May 8, 10:30AM-11:30AM EDT (Virtual)

CENTER FOR

ASTROPHYSICS

HARVARD & SMITHSONIAN

The Science Education Department (SED) Research Group (a.k.a the Posse) End of the Year Presentations

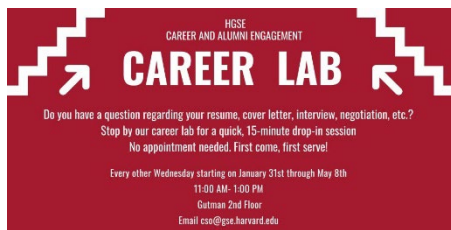
[Join the Zoom](#)

Please join the Science Education Department Research Group (a.k.a the Posse) leaders and members for the SED's final and special Seminar for this spring. This year, under the guidance of Dr. Philip Sadler, Dr. Gerhard Sonnert and postdocs Dr. Rongxiu Wu and Dr. Tingting Reid, we have graduate students from the Harvard Graduate School of

Education (HGSE) as well as the Harvard Physics Department and Harvard School of Engineering and Applied Sciences (SEAS) joining us for three presentations.

Persons with disabilities who anticipate needing accommodations may contact Wendy Berland at wberland@cfa.harvard.edu in advance of the seminar.

Wednesday, May 8, 11AM-1PM EDT (In Person)

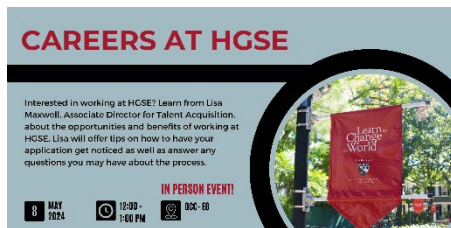


Career Lab

Gutman 2nd Floor

Do you have a question regarding your resume, cover letter, interview, negotiation, etc.? Stop by CSO's Career Lab for a quick, 15-minute drop-in session, no appointment needed. It'll be first come, first serve!

Wednesday, May 8, 12PM-1PM EDT (In Person)



Working at HGSE with Lisa Maxwell, Associate Director, HGSE Human Resources

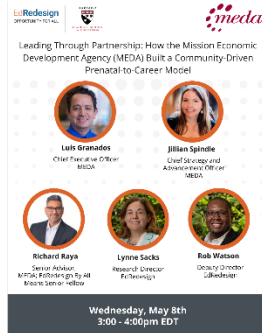
Gutman Conference Center 8

Please join Lisa Maxwell, Associate Director for Talent Acquisition, to learn about the opportunities and benefits of working at HGSE. Lisa will offer some tips on how to have your application get noticed as well as answer any questions you may have about the process.

Please **register on this page** to receive any updates about this event.

All are welcome, but please note that HGSE does not sponsor visas for staff positions.

Wednesday, May 8, 3PM-4PM EDT (Virtual)



Leading Through Partnership: How the Mission Economic Development Agency (MEDA) Built a Community-Driven Prenatal-to-Career Model

This webinar will include highlights of our recently released case and a panel discussion with MEDA leaders who partnered with community residents and community-based organizations to create the Mission Promise Neighborhood. During the webinar, participants will develop a deeper understanding of MEDA's innovative, community-centered approach; and learn how leaders of place-based partnerships can address challenges and make difficult decisions.

[Register here.](#)

This event is sponsored by the EdRedesign Lab

Thursday, May 9, 12PM-2PM EDT (In-Person)



Cambridge Common Picnic

[Register here](#)

Join the HGSE student community on Thursday, May 9 at Cambridge Common for a celebratory end-of-year picnic! Light refreshments and snacks will be provided. Students are encouraged to bring their own picnic lunch and a shareable snack if desired. Don't miss out on this opportunity to relax and celebrate with friends after finals! While May is typically a sunny month in Boston, this event will be rescheduled in the case of rain. Cambridge Common is conveniently [located across from the HGSE campus](#).

If you require accessibility accommodations, please contact Annie Lewis at annie_lewis@gse.harvard.edu at least 48 hours in advance.

Thursday, May 9, 12PM-1:30PM EDT (In-Person)

EdEthics Normative Case Discussion

Gutman 404

Join us for FREE LUNCH and discussion of about the tensions that educators face when trying to raise critical consciousness amid anti-CRT laws. RSVP at jhauver@g.harvard.edu -- you will receive a copy of the case (a 4.5 page narrative) to be read before our discussion.

FUTURE EVENTS AND OPPORTUNITIES

Monday, May 13 through Wednesday, May 15, 1PM-4PM EDT (In-Person)

Opportunity to learn Python and build a chatbot

EIS Studio, Gutman 3rd Floor

Come master introductory programming principles in Python in an intensive workshop! You will also learn about chatbots such as ChatGPT, and build your own version of the chatbot by the end of the workshop. We'll celebrate with free boba tea at the end

Wednesday, May 15, 2PM-3PM EDT (Hybrid)

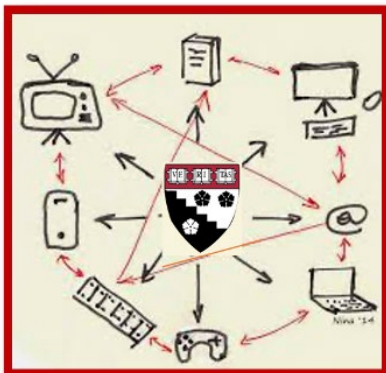
VOICES OF JOY & RESILIENCE: LIVED EXPERIENCES OF HGSE STAFF, STUDENTS & FACULTY WITH DISABILITIES		
WED. MAY 15	2:00 - 3:00 P.M.	HYBRID
Please join the Students with Disabilities Union and the HGSE Disabled Staff Affinity Group to hear from HGSE community members as they share navigating life and academia as people with disabilities. All HGSE community members, especially allies and/or folks who want to learn to become better allies, are welcome.		IN-PERSON LOCATION TBA
We're also looking for speakers!		

Voices of Joy & Resilience: Lived Experiences of HGSE Staff, Students, and Faculty with Disabilities

Please join the Students with Disabilities Union and the HGSE Disabled Staff Affinity Group to hear from HGSE community members as they share navigating life and academia as people with disabilities. All HGSE community members, especially allies and/or folks who want to learn to become better allies, are welcome. We're also looking for panelists! Any HGSE faculty, staff, or student is welcome to apply.

[RSVP here.](#)

APPLY BY Wednesday, May 15

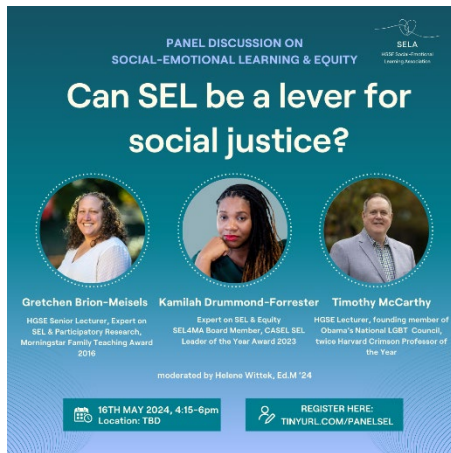


Primary Sources: The Catalyst for Deeper Learning Across Media - Scholarship Application

Experience the latest 4-week (July 10-August 7) online Cross Media workshop funded by Library of Congress grant. Learn the latest cross-media methods incorporating strategic use of primary sources with films, books, and other media into teaching/learning. Stories ignite engagement; analytic methods cultivate students' perspective taking and investigating primary sources builds media literacy skills across subjects/disciplines and learner levels.

[Apply here.](#)

Thursday, May 16, 4:15PM EDT



SEL & Equity Panel: Can SEL be a lever for social justice?

Learn about SEL & Equity and connect with professors Gretchen Brion-Meisels and Tim McCarthy as well as SEL4MA board member and CASEL Leader of the Year award recipient Kamilah Drummond-Forrester. Join for networking opportunities, interactive SEL activities for attendees, and leave with practical tools to integrate SEL into your educational practices.

Go to tinyurl.com/PanelSEL to register.

This event is sponsored by student organization HGSE Social-Emotional Learning Association

Wednesday, May 22, 12PM-1PM EDT (Virtual)



[Webinar] Raising Resilient Kids: Children's Mental Health in Today's World

[Register here.](#)


Join expert Dr. Bob Franks, President and CEO of The Baker Center and faculty member at Harvard Medical School, for Raising Resilient Kids: Children's Mental Health in Today's World.

From nurturing emotional intelligence to promoting healthy coping mechanisms, we'll explore practical ways to raise mentally strong and emotionally resilient kids. Plus, we'll provide insights into recognizing signs that our children may be struggling with their mental health and offer guidance on seeking appropriate help and resources. There will be ample time for questions during this Children's Mental Health Awareness Day event. Can't attend live? Sign up to receive the recording.

These Care Conversations webinars are free to attend, and a recording will be shared afterwards.

ONGOING OPPORTUNITIES & RESOURCES

Join a Research Study
on Collaborative Learning in STEM Education



Project Description

Help us learn about collaboration and innovation in STEM education using eye-tracking technology

Location
Gutman Library, Room 317

Duration
70 minutes

Eligibility

- Current HGSE student
- If you wear glasses, you must wear contacts during the study


Participants will be...

- Working with another participant
- Recorded for internal review
- Asked to complete a pre and post-survey (confidential)

Participants will receive...

- A \$20.00 Amazon gift card for completing the study


Scan QR code to apply:



Thank you for your interest in participating:

This study is conducted by the Learning, Innovation, and Technology Lab at the Harvard Graduate School of Education.

Visit <https://lit.gse.harvard.edu/> or contact Lead Faculty Researcher **Bertrand Schneider** at bertrand_schneider@gse.harvard.edu with questions.

HARVARD GRADUATE SCHOOL OF EDUCATION 

Join a Research Study on Collaborative Learning in STEM Education

Help the Learning, Innovation, and Technology Lab at HGSE learn about collaboration and innovation in STEM education using eye-tracking technology.

[Sign up here.](#)

 **BARRIERS TO ACCESS FORM**

Office of Diversity, Equity, and Inclusion

Please use this form to notify us if you are unable to fully participate in the HGSE community because of one or more of your identities (such as race, ethnicity, gender identity, sexuality, socioeconomic status, disability, religious beliefs, or other.) *This could include barriers related to disability, programmatic concerns, or issues of inclusion.*

We will share the necessary information to the appropriate campus partners so that the barrier(s) may be assessed as soon as possible. However, this form is NOT intended for emergencies or to request student accommodations.

<https://bit.ly/hgsebarrierstoaccess>



Barriers to Access Form Launch

We're happy to announce the launch of ODEI's [Barriers to Access Form](#), which will help us to ensure that the HGSE campus and its digital presence is available and accessible to all - faculty, staff, students, alumni, and visitors. Please use this form to notify us if you are unable to fully participate in the HGSE community because of one or more of your identities (such as race, ethnicity, gender identity, sexuality, socioeconomic status, disability, religious beliefs, or other). *This could include barriers related to disability, programmatic concerns, or issues of inclusion.*

We will share the necessary information to the appropriate campus partners so that the barrier(s) may be assessed as soon as possible.

However, this form is NOT intended for emergencies (contact Operations at (617) 495-5711) or to request student accommodations (Email hgsesupport@gse.harvard.edu with questions).

Please feel free to reach out to Dorie Campbell at dorie_campbell@gse.harvard.edu with any questions.



Student Discount on Harvard Education Press Books

HGSE students receive a 30% discount on all HEP books when using promo code HGSET at checkout on the [HEP website](#).

Newly released titles include:

- *#BlackEducatorsMatter*,
- *Emotional Intelligence for School Leaders*,
- *Education Lead(Her)ship*



Mindfulness for Students at the Center for Wellness and Health Promotion

As we start the new semester here at [CWHP](#), we are excited to offer a variety of mindfulness programs to support your wellbeing. Subscribe to the monthly newsletter [here](#) for more information on wellness offerings, classes, and workshops!



Work Accountability Groups

Student Support Services hosts weekly Work Accountability Groups (WAGs) on Zoom. These accountability groups will hold space for students to gather and work in a supportive environment. Each WAG is 2 hours long and they are hosted multiple times throughout the week.

For more information and to join, and please [visit here](#).

RELIGIOUS RESOURCES



Harvard Chaplains

Harvard Chaplains

The Harvard Chaplains, a professional community of more than thirty chaplains, represent many of the world's religious, spiritual, and ethical traditions, and share a collective commitment to serving the spiritual needs of the students, faculty, and staff of Harvard University. Learn more on the [Chaplains website](#).



Prayer Space on the HGSE Campus

Longfellow 214 is a dedicated prayer space here on the HGSE campus. Recognizing that not all buildings are open during the weekends, Gutman 440 has been reserved as prayer space on Saturday and Sundays, during regular Library hours.



The Memorial Church of Harvard University

The Memorial Church of Harvard University, part of a [vibrant interfaith network of Harvard](#), is an interdenominational Protestant church in the midst of Harvard Yard that serves as a place of spiritual refuge to the entire community. “MemChurch” stands opposite Widener Library as a visible reminder of the historical and spiritual heritage that has sustained Harvard for nearly four centuries. In addition to our [regularly scheduled services](#), we also offer a variety of [programming](#) for students, adults, and children.



Harvard Hillel

Harvard Hillel is a Jewish home on campus that seeks to:

- Welcome students to experience the variety of Jewish identity, tradition, practice, values, culture, and community.
- Inspire and enable Jewish connection, celebration, and action.
- Prepare students to join, create, shape, and lead Jewish communities; strengthen the Jewish people, and live proud Jewish lives.
- Share Jewish sources, traditions, ideas, and innovations, and their relevance in our world.
- Forge connection and engagement with the State of Israel.
- Foster friendship in a nurturing and refreshing sanctuary amid the stresses of student life.
- Engage the unique opportunities of Harvard and make Jewish thought and culture integral in the life of the University.



Please Note: In addition to student events and resources, the HGSE Weekly Newsletter is the official communication channel for important information regarding Commencement.